


**BEDFORDSHIRE
FOOTBALL LEAGUE
FOUNDED 1904**

**SEASON
2007-2008**

**HON. GENERAL SECRETARY
G. B. SNELSON
19 BAMBURGH DRIVE
BEDFORD MK41 8JP
 01234 344417**

McGIRLS MONEY MANAGEMENT

**SUPPORTERS OF THE BEDFORDSHIRE FOOTBALL LEAGUE
CALL TO MAKE AN APPOINTMENT ON**

01234 344111

**23 ST CUTHBERTS STREET
BEDFORD MK40 3JG**

**Specialists in personal and corporate financial
guidance, including mortgages, re-mortgages, life
cove, building and contents insurance, pensions,
investments, and wills.**

McGIRLS MONEY MANAGEMENT

**BEDFORDSHIRE FOOTBALL LEAGUE
SEASON 2007-2008**

CONTENTS

FORMATION OF DIVISIONS 2007-2008	1
OFFICERS	2
MANAGEMENT COMMITTEE MEMBERS	2
LIFE VICE-PRESIDENTS	2
AUDITOR	2
For the Guidance of Club Secretaries	3
Affiliation	3
Colours	3
Times for matches	3
Notification of match details	3
Referees	3
Unregistered players and transfers	3
First aid kit	3
Cautions and sendings-off	3
Telephoning of match results	4
Match result sheets	4
Postponements	4
Telephone calls	4
Finally	4
TO REFEREES	5
ASSESSMENT OF REFEREES	5
Advice to Club Secretaries on Methods	5
Club Report Form on Referees	5
RULES OF THE LEAGUE	6
Nomenclature and Constitution	6
Entry Fee, Subscription, Deposit	6
Officers	6
Management, Nomination, Election	7
Powers of Management	7
Annual General Meeting	8
Agreement to be Signed	9
Qualification of Players	9
Club Colours. Club Name	10
Playing Season. Conditions of Play. Times of Kick-Off. Postponements.	
Substitutes	11
Reporting Results	12
Determining Championship	13
Referees	13
Continuation of Membership or Withdrawal of a Club	14
Protests and Complaints	14
Board of Appeal	15
Exclusion of Clubs or Teams, Misconduct, Clubs, Officials, Players	15
Trophy:- Legal Owners, Conditions of Taking Over, Agreement to be Signed,	
Awards	15
Special General Meetings	16
Alteration to Rules	16
Rules Binding on Clubs	16
Finance	17
Dissolution of the League	17

**BEDFORDSHIRE FOOTBALL LEAGUE
SEASON 2007-2008**

Emergency Decisions	17
Schedule of Fines	17
RULES FOR KNOCK-OUT COMPETITIONS	17
OFFICIAL LIST of registered REFEREEs	19
ADDITIONAL REFEREEs	20
DIRECTORY OF CLUBS	22
FINAL LEAGUE TABLES 2006-2007	33
LEAGUE CUPS	35
BEDFORDSHIRE FA CUPS	35
CLUB ASSISTANT REFEREE AWARDS	35
PREMIER DIVISION ENTRY REQUIREMENTS	35
LEAGUE RECORDS	36
MANAGEMENT COMMITTEE MEETING DATES	41
ANNUAL GENERAL MEETING 2008	41
THE NATIONAL LEAGUE SYSTEM	42
1. Introduction	42
2. Position of a League in the National League System	42
3. Rules and Regulations for Promotion and Relegation	43
4. Detailed Promotion and Relegation Issues	43
Step 1 and Step 2	43
Step 2 and Step 3	43
Step 3 and Step 4	44
Step 4 and Step 5	44
Step 5 to Step 6 and Step 6 to Step 7	44
5. The Movement of Clubs within the National League System other than by Promotion or Relegation	45
6. Election of a Club into a League	45
7. National League System Working Groups	46
8. Procedures for the Determination of any Matter, Dispute or Difference by the Leagues Committee	46
9. Dispute Procedure	46
10. Arbitration	46
LEAGUES/DIVISIONS AT STEPS 5, 6 & 7 OF THE NATIONAL LEAGUE SYSTEM	47
NOTES	48
NOTES	49
NOTES	50

**BEDFORDSHIRE FOOTBALL LEAGUE
SEASON 2007-2008**

FORMATION OF DIVISIONS 2007-2008

PREMIER DIVISION [15]

AFC KEMPSTON TOWN
BLUNHAM
CALDECOTE
CAMPTON
ICKWELL & OLD WARDEN
LUTON BOROUGH
MELTIS CORINTHIANS
OAKLEY SPORTS
RENHOLD UNITED
RISELEY SPORTS
SANDY
SHARNBROOK
WESTONING RECREATION CLUB
WILSHAMSTEAD
WOBURN

DIVISION ONE [16]

AFC KEMPSTON TOWN RESERVES
BEDFORD SA
CALDECOTE RESERVES
CAMPTON RESERVES
DUNTON
ELSTOW ABBEY 06
FLITWICK TOWN
HENLOW
KEMPSTON
MARSTON SOCIAL
REDDINGS WOOD
ROYAL OAK KEMPSTON
SANDY RESERVES
STEVINGTON
TURVEY
WESTONING RECREATION CLUB RESERVES

DIVISION TWO [16]

BEDFORD COLLEGE
BLUNHAM RESERVES
CLIFTON
GREAT BARFORD
ICKWELL & OLD WARDEN RESERVES
LIDLINGTON UNITED SPORTS
MARSTON SHELTON ROVERS
MELTIS ALBION
MEPPERSHALL JURASSIC
MULBERRY BUSH
NEWNHAM ATHLETIC
OAKLEY SPORTS RESERVES
PUTNOE UNITED
RENHOLD VILLAGE
SAFFRON
WOBURN RESERVES

DIVISION THREE [17]

AFC SHILLINGTON
BLUE CHIP
CALDECOTE 'A'
EXEL UNITED
FLITWICK TOWN RESERVES
HARTWELL
KINGS AFC
LIDLINGTON UNITED SPORTS RESERVES
MARABESE CERAMICS
MARSH LEYS
MELTIS CORINTHIANS RESERVES
POTTON WANDERERS
RISELEY SPORTS RESERVES
SANDY 'A'
STEWARTBY VILLAGE
TWINWOODS THISTLE
WILSHAMSTEAD RESERVES

**BEDFORDSHIRE FOOTBALL LEAGUE
SEASON 2007-2008**

OFFICERS

President: Mr T.M. SADLER

65a Silver Street, Great Barford, Bedfordshire MK44 3JA ☎ 01234-870920
*Elected Vice-Chairman 1973 – Chairman 1981 – President 1998

Chairman of Committee: Mr P.J. ONION

10 Sand Lane, Northill, Bedfordshire SG18 9AD ☎ 01767-627396
*Elected 1984 – Vice-Chairman 1986 – Chairman 1998

Vice-Chairman & Hon. Treasurer: Mr B.T. WATSON

17 Buttercup Close, Bedford MK42 0RE ☎ 01234-351890
*Elected 1983 – General Secretary/Treasurer 1984 – Treasurer 1993
Vice-Chairman/Treasurer 2005

Hon. Registration Secretary: Mr J. WARNER

4 Vicarage Green, Thurleigh, Bedfordshire MK44 2DR ☎ 01234-771923
*Elected Registration Secretary 1998

Hon. Referee Secretary: Mr G. CAVES

43 The Glebe, Clapham, Bedfordshire MK41 6GB ☎ 01234-354854
*Elected Referee Secretary 2001

Hon. General Secretary: Mr G.B. SNELSON

19 Bamburgh Drive, Bedford MK41 8JP ☎ 01234-344417 Fax 01234-317597
*Elected Fixture Secretary 1977 – Fixture/Registration Secretary 1988
General Secretary 1993 – General Secretary/Fixtures 2002

MANAGEMENT COMMITTEE MEMBERS

Hon. Results Secretary: Mr J. ALLEN

38 Northwood End Road, Haynes, Bedfordshire MK45 3QB ☎/Fax 01234-381326
*Elected 1994 – Results Secretary 1996

Hon Press & Media Secretary: Mr P FRANCIS

6 Willow Rise, Sandy, Bedfordshire SG19 1AY ☎ 01767-221022 or 07779680269
*Elected 2004 – Press & Media Secretary 2005

Mr K. REDMAN

30 Glebe Road, Sandy, Bedfordshire SG19 1LS ☎ 01767-224369
*Elected 1998

Mr R. LEONARD

11 Tithe Farm Close Langford, Bedfordshire SG18 9NE ☎ 01462-700525 or 07745467619
*Elected 2005

Mr G. KYRIACOS

9 Orchard Close, Cranfield, Beds MK43 0HX ☎ 01234-751709 or 077474477441
*Elected 2005

LIFE VICE-PRESIDENTS

CL Eckstein 1972 – RC Devereux 1984 – G Armstrong 1985 – RW Curtis 1986
D Cousens 1997 - CH Simmonds 1998 – DG Martin 2004 – C Woods 2005

AUDITOR

D Milton

FOR THE GUIDANCE OF CLUB SECRETARIES

AFFILIATION

Ensure your Club is affiliated to your County Football Association. Your Club will not be issued with fixtures until your affiliation receipt number has been received by the Hon. General Secretary.

Bedfordshire Clubs are reminded they **MUST** enter for a County Cup Competition; insure their players under the COUNTY INSURANCE SCHEME; have PUBLIC LIABILITY INSURANCE [also available through the County F.A.], and send a copy of their Club's audited accounts to the Beds FA by 31st July each year. For these items communications should be addressed to

*The Chief Executive, Bedfordshire Football Association Limited
Century House, Skimpot Road, Dunstable, Bedfordshire LU5 4JU
Telephone 01582-565111 Fax 01582-565222*

COLOURS

The colours of your Club team[s], registered with the County Football Association and printed in this handbook, can be changed but only with the permission of the League and the County F.A. See rule 9B. Bedfordshire F.A. levy a charge for Clubs wishing to change their registered colours. See rule 9A for which team changes in the case of a clash of colours.

TIMES FOR MATCHES

Kick-off times shall be in accordance with rule 10[B]. Please note the different times for cup ties. Allow plenty of time in order to avoid a late start. Get your players to realise the value and importance of turning up promptly.

NOTIFICATION OF MATCH DETAILS

The HOME CLUB must give its opponents and the Referee full details of the arrangements connected with the match. See rule 10D.

REFEREES

Use the guide in this handbook for the assessment of referees. Ensure you know the name of the referee and make sure this is entered correctly on the Match Result Sheet you submit to the League. If necessary check with your opponents or the Hon. Referee Secretary. If no referee has been appointed to your match, or the appointed referee fails to arrive for the game, it is the duty of the two competing Clubs [teams] to agree a substitute - see rule 13B. Please ensure you pay the referee promptly after the match.

UNREGISTERED PLAYERS AND TRANSFERS

Make sure that all your players are registered with the League. If in doubt check beforehand with the Registration Secretary. The latest a player can be registered is 12 NOON ON THE DAY OF THE MATCH. See rule 8B. Add the Registration Number from your record to the form before sending it to the Registration Secretary.

Transfer Forms **MUST** be received by the Registration Secretary in accordance with rule 8K. Before a player is eligible to play for his new Club the transfer process must be completed by 12 NOON ON THE DAY OF THE MATCH.

FIRST AID KIT

All teams are required to have a first aid kit available at the ground for each match. The contents of the kit are to be in accordance with that printed in the Bedfordshire F.A. Handbook. Clubs should make every effort to ensure a person trained in first aid is in attendance at all matches.

CAUTIONS AND SENDINGS-OFF

If a person connected with your Club receives a caution or is sent-off, before, during, or after the game, and you have not received correspondence on the matter from the County Football Association, check with your County F.A. Secretary. For Bedfordshire Clubs, Peter D. Brown, address on page 4.

**BEDFORDSHIRE FOOTBALL LEAGUE
SEASON 2007-2008**

TELEPHONING OF MATCH RESULTS

Match results must be made known to the HON. RESULTS SECRETARY within one and a half hours of the final whistle. For League matches and League Cup ties this needs to be done **ONLY BY THE HOME CLUB**. See rule 11B.

For County F.A. Cup ties, **BOTH HOME AND AWAY CLUBS** need to telephone the match result to the HON. RESULTS SECRETARY. See rule 11B.

Also, make sure you know who needs to telephone the result through to the County F.A. for these cup ties, and by when the results have to be received.

MATCH RESULT SHEETS

BEFORE THE MATCH fill in the shaded area for TEAM 'A', whether you are the HOME or AWAY team. **Put the players names in the order of their shirt numbers**. Substitutes **MUST** be named. PASS the WHITE copy to your opponents. PASS the YELLOW copy to the referee, and RETAIN the BLUE copy.

AFTER THE MATCH fill in the clear area for TEAM 'B', whether you were the HOME or AWAY team. The names of the players WHO ACTUALLY PLAYED MUST BE LISTED IN REGISTRATION NUMBER ORDER and NOT in playing or any other order. Only include the names and registration numbers of your substitutes IF THEY ACTUALLY PLAYED. THE REGISTRATION NUMBER OF EACH PLAYER MUST BE INCLUDED.

A mark **MUST** be given for the referee, and the result sheet **MUST** be signed by your Club Secretary. The sheet **MUST** be received by the HON. REGISTRATION SECRETARY by the Wednesday following a Saturday match, or within 48 hours of other games.

FOR COUNTY F.A. CUP TIES, County Cup result sheets are to be forwarded to the County F.A. The League copy of the County Cup form can be sent to the League Registration Secretary in place of the League form. There is no requirement to exchange League Match Result Sheets before County Cup Ties.

POSTPONEMENTS

In the event of a postponement or cancellation of a game FOR ANY REASON WHATEVER, it is the duty of the HOME CLUB Secretary to notify THE OPPONENTS, THE REFEREE, THE HON. REFEREE SECRETARY, THE HON. GENERAL SECRETARY AND THE HON. RESULTS SECRETARY at the EARLIEST POSSIBLE MOMENT. This will facilitate any rearrangement of fixtures and the re-appointment of officials.

THE FITNESS OF THE GROUND MUST BE DECIDED BY A REFEREE. See rule 13D.

Requests for postponements of fixtures must be considered by the Management Committee at one of its meetings. Therefore at least TWO MONTHS notice of a request for postponement will normally be required in writing to the HON. GENERAL SECRETARY.

Don't forget to notify your opponents and the Hon. General Secretary when you are engaged in a County Cup tie as it affects your League fixtures.

TELEPHONE CALLS

Please keep them within reasonable hours.

FINALLY

Make yourself familiar with all the rules of the League and the County Football Association. Follow this checklist which covers many of the important routine activities. If you do receive a fine from the League or the County F.A., please pay promptly - late payments will cost you more money or even a Club suspension. If you wish to question the fine, the advice is **PAY THE FINE AND ASK QUESTIONS LATER**. You can be assured the matter will be properly dealt with. Don't guess if you have any doubts on any matter. Check with one of the League Officers on League matters, or with the County F.A. Secretary on county matters, including discipline.

Enjoy the season.

TO REFEREES

Please notify acceptance or refusal of appointments within three days of receiving notice of the appointment, and advise your open dates for the following month.

All cases of non-receipt of information from the HOME CLUB [see rule 10D] and late starts [see rule 10B] should be notified to THE HON. GENERAL SECRETARY or HON. REFEREE SECRETARY. All communication with reference to appointments should be sent directly to the HON. REFEREE SECRETARY.

If you don't receive details of a match to which you have been appointed, check with THE HON. GENERAL SECRETARY that the match is still 'on'.

ASSESSMENT OF REFEREES

ADVICE TO CLUB SECRETARIES ON METHODS

It is felt that Club Secretaries would welcome some suggestions on how the assessment of a Referee can be completed.

By the use of these suggestions there can be uniformity in all areas. Forget the knowledge of a referee's past performance and judge him solely on his performance in the particular match on which your assessment is being made. Above all be fair, and make your assessment strictly on the system herewith advocated.

CLUB REPORT FORM ON REFEREES

Control

Did the Referee control the players efficiently?

Did the Referee face up to difficulties?

Was the Referee influenced by the crowd?

Did the Referee deal satisfactorily with major incidents [particularly those involving misconduct and/or violent conduct]?

Application of the Laws

Were the Referee's decisions correct according to the Laws of the Game?

Were the Referee's decisions given clearly?

Did the Referee make effective use of the Linesmen [or Assistant Referees, if appointed]?

Was the Referee's positioning satisfactory?

Did the Referee keep up with play?

Personality and Personal Appearance

Was the Referee confident, impartial, and quick thinking?

Did the Referee inspire confidence?

Was the Referee's personal appearance satisfactory?

Award an overall mark out of ONE HUNDRED. Any mark of forty or less must be accompanied with a letter of explanation to the HON. REFEREE SECRETARY.

The mark you have awarded is the figure entered on the MATCH RESULT SHEET. Use of this system should give greater satisfaction to both Referees and Clubs, but must be used conscientiously and in accord with the suggestions.

Referees will know their assessment is to be based, by all Clubs alike, on their considered performance of the official according to a unified system, which should be of mutual advantage to all.

This phase of the game is important as Referees must be engaged to control matches. Your regular use of these suggestions, linked with careful and unbiased judgement, should result in a more accurate measurement of a Referee's ability, and his ultimate classification. Clubs are thereby assured of any senior Referee having gained his seniority by merit, resulting in an increased confidence in that referee's ability.

RULES OF THE LEAGUE

NOMENCLATURE AND CONSTITUTION

1. This Competition shall be designated The Bedfordshire Football League. All Member Clubs must be affiliated to an affiliated County Football Association and their names and particulars shall be returned annually by the appointed date on the Form "D" to the Bedfordshire County Football Association. The area covered by the Competition Membership shall be the County of Bedfordshire, together with Clubs playing on grounds outside, but close to, the County border.

This Competition shall apply annually for sanction to the Bedfordshire Football Association. The constituent teams of Member Clubs may be grouped in divisions, namely a Premier Division and others as may be decided. The Premier Division shall normally comprise sixteen teams, but may be reduced depending upon the number and quality of the eligible teams. All Premier Division teams shall have approved grounds and accommodation. Reserve teams of Clubs playing in other competitions at Step 6, or higher, of the National League System will be eligible to play in the Premier Division.

ENTRY FEE, SUBSCRIPTION, DEPOSIT

2. [A] Applications by Clubs for admission to this Competition, or the entry of an additional team or teams, must be made in writing to the Hon General Secretary on or before 1st April in each year. An application must be accompanied by an Entry Fee of £20 per team which shall be used as the deposit [see rule 2C], or shall be returned in the event of non-election. The Entry Fee shall be forfeited if the application is withdrawn by the Club.

When Rule 12[B] is applied and a team seeks a transfer or is compulsorily transferred to another division no Entry Fee shall be payable.

[B] Irrespective of the number of teams entered, each CLUB playing in the League shall pay an Annual Subscription of £75 payable by 31st May in each year. The subscription shall include:

- * entry to League Cup competitions;
- * registration fees for TWENTY players;
- * TWO League Handbooks;
- * Match Result Sheets for the season, as appropriate to the number of teams entered.

[C] Each Club shall within seven days of election pay a Deposit of £20 per team, which shall be returnable to teams on leaving the Competition provided they have fulfilled their fixtures and complied with all orders of the Management Committee.

[D] A Club shall not participate in this Competition until the Annual Subscription, and Entry Fee and Deposit where applicable, have been paid.

[E] Clubs must advise annually to the Hon General Secretary in writing, or on the prescribed form, by 31st May in any year of its County Football Association affiliation number for the forthcoming Season. Clubs must also advise the Hon General Secretary in writing, or on the prescribed form, of details of its Headquarters, Officers and any other information required by the Competition. Clubs failing to comply shall be fined in accordance with item C of the schedule of fines.

OFFICERS

3. The Officers of the Competition shall be the President, Chairman, Vice-Chairman, Hon. Treasurer, Hon. General Secretary, Hon. Registration Secretary, and Hon. Referees Secretary, to be elected annually at the Annual General Meeting.

The Offices of Chairman and Hon General Secretary shall confer on the persons holding them the joint ownership of all Competition property, which shall be held by these officers on behalf of the Competition. Such ownership is vested solely in the Office and not in the individual who shall at once lose all legal claim to the Competition Assets when vacating the Office, either through resignation or by the votes of a majority at a meeting of Clubs summoned in accordance with Rule 6 or Rule 19.

**BEDFORDSHIRE FOOTBALL LEAGUE
SEASON 2007-2008**

MANAGEMENT, NOMINATION, ELECTION

4. [A] The Competition shall be governed in accordance with the Rules and Regulations of The Football Association by an Management Committee comprised of the Officers and independent members as necessary, two of whom shall be Hon Results Secretary and Hon Press & Media Secretary, who shall be elected at the Annual General Meeting. No member of the Management Committee shall be connected in any official capacity with any Club in the League. For the purposes of this rule, Hon. Presidents or Vice-Presidents of Clubs are not considered as being connected in any 'official capacity' with such Club.

[B] Retiring Officers shall be eligible to become candidates for re-election without nomination. All other candidates for election as Officers or Members of the Management Committee shall be nominated to the Hon General Secretary in writing, signed by the Secretaries of two Member Clubs, not later than 1st May in each year. Names of the candidates for election shall be circulated with the notice of the Annual General Meeting. In the event of there being no nomination in accordance with the foregoing for any office, nominations may be received at the Annual General Meeting.

[C] The Management Committee shall meet monthly to deal with business as it arises. The Hon General Secretary shall have authority to convene other meetings at any time he may consider necessary, or upon receiving a requisition signed by two-thirds of the Members of the Management Committee.

[D] Except where otherwise mentioned all communications shall be addressed to the Hon General Secretary, who shall conduct the correspondence of the Competition and keep a record of its proceedings.

[E] All communications received from Clubs must be conducted through their nominated Officers.

POWERS OF MANAGEMENT

5. [A] The Management Committee may appoint sub-committees and delegate such of their powers as they deem necessary. The decisions of all such committees shall be reported to the Management Committee for ratification.

[B] Subject to the permission of the Bedfordshire County Football Association having been obtained the Management Committee may order a match or matches to be played each season, the proceeds to be devoted to the funds of the Competition and, if necessary, may call upon each Club [including any Club which may have withdrawn during the season] to contribute equally such sums as may be necessary to meet any deficiency at the end of the season. [See Rule 6[e]].

[C] Each Member of the Management Committee shall have the right to attend and vote at all Management Committee Meetings and have one vote thereat, but no Member shall be allowed to vote on any matters directly appertaining to such Member or to the Club so represented. [This shall apply to the procedure of any sub-committee]. In the event of the voting being equal on any matter, the Chairman shall have a second or casting vote.

[D] The Management Committee shall have powers to apply, act upon and enforce the Rules of the Competition and shall also have jurisdiction over all matters affecting the Competition, including any not provided for in the Rules. Except where these Rules provide for the imposition of a set penalty any Club, Official or Player alleged to be in breach of a Competition Rule must be formally charged in writing and given the opportunity to present their case before the Management Committee. All breaches of the Laws of the Game, Rules and Regulations of The Football Association shall be dealt with in accordance with F.A. Rules.

[E] All decisions of the Management Committee shall be binding subject to the right of appeal to the Board of Appeal in accordance with Rule 16. Decisions of the Management Committee must be notified in writing to those concerned within fourteen days.

[F] Five Members of the Management Committee shall constitute a quorum for the transaction of business of the Management Committee and two Members shall constitute a quorum for the transaction of business by any sub-committee of the Competition.

**BEDFORDSHIRE FOOTBALL LEAGUE
SEASON 2007-2008**

[G] The Management Committee, as it may deem necessary, shall have power to fill, in an acting capacity, any vacancies that may occur amongst their number.

[H] A Club having failed to comply with an order or instruction of the Management Committee, or failing to satisfactorily attend to the business and/or the correspondence of the Competition, shall be liable to be fined or otherwise penalised at the discretion of the Management Committee.

[I] All fines and charges shall be paid within 14 days of the date of posting of the written notification. Clubs failing to comply shall be additionally fined in accordance with item C of the schedule of fines.

[J] A member of the Management Committee appointed by the Competition to attend a meeting or match may have any expenses incurred refunded by the Competition.

[K] The Management Committee shall have the power to fill any vacancy that may occur in the membership of the Competition between the Annual General and the commencement of the Competition season.

ANNUAL GENERAL MEETING

6. [A] The Annual General Meeting shall be held not later than the third week in June in each year. At this meeting the following business shall be transacted :-

- * To receive and confirm the Minutes of the preceding Annual General Meeting.
- * To consider any business arising therefrom.
- * To receive and adopt the Annual Report, Balance Sheet and Statement of Accounts.
- * Election of Officers and Management Committee.
- * Appointment of Auditors.
- * Alteration of Rules, if any [of which notice has been given].
- * Determine the dates for the commencement and conclusion of playing season.
- * Other business of which due notice shall have been given and accepted as being relevant to an Annual General Meeting.

[B] A copy of the duly audited Balance Sheet, Statement of Accounts and Agenda shall be forwarded to each Club at least fourteen days prior to the meeting, and to the Bedfordshire County Football Association.

[C] A signed copy of the duly audited Balance Sheet and Statement of Accounts shall be sent to the Bedfordshire County Football Association by 31st July in each year following its adoption by the Annual General Meeting.

[D] Each Member Club shall be empowered to send two delegates to an Annual General Meeting. Each Club shall be entitled to one vote only. Not less than fourteen days' notice shall be given of any Meeting.

[E] Clubs who have withdrawn their Membership of the Competition during the season being concluded or who are not continuing Membership shall not be entitled to attend.

[F] All voting shall be conducted by a show of voting cards unless a ballot be demanded by at least ten of the delegates qualified to vote or the Chairman so decides.

[G] No individual shall be entitled to vote on behalf of more than one Member.

[H] Any continuing Member Club, or new Club, failing to be represented at the Annual General Meeting shall be fined in accordance with item D of the schedule of fines, subject to Rule 15.

[I] Management Committee members shall be entitled to attend and vote at an Annual General Meeting.

**BEDFORDSHIRE FOOTBALL LEAGUE
SEASON 2007-2008**

AGREEMENT TO BE SIGNED

7. The Chairman and the Secretary of each Club shall complete and sign the following agreement which shall be deposited with the Competition together with the Application for Membership for the coming season, or upon indicating that the Club intends to compete.

"We, A _____ [Chairman] and B _____ [Secretary] of the _____ Football Club have been provided with a copy of the Rules and Regulations of the Bedford and District Football League and do hereby agree for and on behalf of the said Club to conform to those Rules and Regulations and to accept, abide by and implement the decisions of the Management Committee of the Competition, subject to the right of appeal in accordance with Rules 15 and 16."

Any alteration of the Chairman and /or Secretary on the above Agreement must be notified to the County Football Association[s] to which the Club is affiliated and to the Hon General Secretary of the Competition.

QUALIFICATION OF PLAYERS

8. [A] Contract players, as defined in Football Association Rules are not permitted in this Competition.

[B] A registered playing member of a Club is one who, being in all other respects eligible, has signed a fully and correctly completed Competition registration form in ink, countersigned by an Officer of the Club, and who has been registered with the Hon Registration Secretary by 12 noon on the day of the match prior to playing.

A minimum of 11 players per team must be registered 14 clear days before the first Saturday of the League season. Failure to comply will incur a fine in accordance with item D of the Schedule of Fines.

[C] A team shall not include more than 3 players who have taken part in more senior competition matches during the current season unless a period of 21 days has elapsed since they played. For the purpose of this Competition, a senior competition is one at a higher level than this Competition in the National League System.

[D] A player having taken part in matches for any Club affiliated to any County Football Association shall not be allowed to join, be transferred to, or sign for a Club in the Competition without first proving to the officials of the intended Club that the player has discharged all reasonable financial liabilities to the previous Club or Clubs, and a Club official may not accept such player's signature without first ascertaining whether such claims have been discharged to the satisfaction of the Club, or Clubs, for which the player last played.

[E] A fee of £1 shall be paid for each additional player registered above those already covered by the subscriptions. Clubs shall not pay for individual registrations but shall be invoiced for registrations at the end of the season.

[F] The Management Committee shall decide all registration disputes. In the event of a player signing a registration form or having a registration submitted for more than one Club, priority of registration shall decide for which Club the player shall be registered. The Hon Registrations Secretary shall notify the Club last applying to register the player of the fact of the previous registration.

[G] It shall be a breach for a player to:-

[i] Play for more than one Club in the Competition in the same season without first being transferred.

[ii] Having signed for one Club in the Competition, sign for another Club in the Competition in that season except for the purpose of a transfer.

[iii] Submit a signed registration form for registration that the player had wilfully neglected to accurately or fully complete.

[H] [i] The Management Committee shall have power to accept the registration of any player.

[ii] The Management Committee shall have power to refuse, cancel or suspend the registration of any player or may fine any player at their discretion proved guilty of registration irregularities.

[Subject to Rule 16].

**BEDFORDSHIRE FOOTBALL LEAGUE
SEASON 2007-2008**

[iii] The Management Committee shall have power to refuse or cancel the registration of any player found guilty of undesirable conduct [Subject to Rule 16]. Undesirable conduct shall mean an incident of repeated misconduct which may deter a participant from being involved in this Competition. (Note: Action under clause (iii) shall not be taken against a player for misconduct until the matter has been dealt with by the appropriate Association, and then only in cases of the player bringing the Competition into disrepute).

[I] Subject to The Football Association Rules dealing with players without a written contract when a player desires a transfer, the Club the player wishes to transfer to shall submit a transfer form to the Hon Registrations Secretary. A fee of £5 shall be payable. Such transfer shall be referred by the Hon Registrations Secretary to the Club for which the player is registered. Should this Club object to the transfer it should state its objections in writing to the Hon Registrations Secretary and to the player concerned within seven days of receipt of the transfer form. Upon receipt of the Club's consent, or upon its failure to give written objection within seven days, the Hon Registrations Secretary may, on behalf of the Management Committee, transfer the player who shall be deemed eligible to play for the new Club from such date.

In the event of an objection to a transfer the matter shall be referred to the Management Committee for a decision.

[J] A player may not be registered for a Club nor transferred to another Club in the Competition after 15th March in each year, except by special permission of the Management Committee.

[K] A Club shall keep a list of the players it registers and a record of the games in which they have played, and shall produce such records upon demand by the Management Committee. If a Club has not received confirmation of a player's registration, it is the responsibility of the Club Secretary to check with the Hon Registration Secretary that the player is properly registered before playing.

[L] A register containing the names of all players registered for each Club, with the date of registration, shall be kept by the Hon Registrations Secretary and shall be open to the inspection of any duly appointed Member Club representative at all Management Committee meetings or at other times mutually arranged. Registrations are valid for one Season only.

[M] A player shall not be eligible to play for a team in any special championship, promotion or relegation deciding match [as specified in Rule 12[A]] unless the player has played FIVE games for that TEAM in this Competition in the current season.

[O] [i] A team playing an unregistered or otherwise ineligible player or players shall have the points gained in the match deducted from its total and may be fined in accordance with item D of the schedule of fines for each ineligible player and/or dealt with at the discretion of the Management Committee.

(ii) In addition the team shall have points deducted from its total at the discretion of the Management Committee and may be dealt with in any further manner which is thought to be fit.

(iii) The Management Committee in exceptional circumstances may, at its discretion, award any points deducted from a Club under this Rule to the opponents in the match in question, subject to the match not being ordered to be replayed.

[P] To play in this Competition a player must have attained the age of 16 years.

CLUB COLOURS. CLUB NAME

9. [A] Every Club must register the colour of its shirts and shorts with the Hon General Secretary by 31st May, who shall decide as to their suitability.

Goalkeepers must wear colours which distinguish them from other players and the referee. No player, including the goalkeeper, shall be permitted to wear black or very dark shirts.

Any team not being able to play in its normal colours as registered with the Competition shall notify the colours in which they will play to its opponents at least 3 days before the match.

If, in the opinion of the referee, two Clubs have the same or similar colours, the home team shall make the change. Any team not having a change of colours or delaying the kick-off by not having a change shall be fined in accordance with item C of the schedule of fines.

**BEDFORDSHIRE FOOTBALL LEAGUE
SEASON 2007-2008**

The Hon General Secretary of the Competition may request shirts to be submitted if complaints are received as to lack of distinguishing colours, and the Management Committee may refuse to permit any shirts or shorts as they think fit.

[B] Any Club wishing to change its name and/or colours must obtain permission from its affiliated County Association and from the Management Committee.

PLAYING SEASON. CONDITIONS OF PLAY. TIMES OF KICK-OFF.

POSTPONEMENTS. SUBSTITUTES

10. [A] The Annual General Meeting shall determine the commencing and concluding dates for the ensuing season which shall be in accordance with Football Association Rules. Fixtures must commence not later than the first Saturday in September in each season. No Club shall be compelled to play after the concluding date. Original fixtures must not be arranged for a date later than seven days preceding the concluding date determined by the Annual General Meeting.

[B] All matches shall be played in accordance with the Laws of the Game as determined by the International Football Association Board.

Clubs must take all reasonable precautions to keep their grounds in a playable condition. All matches shall be played on pitches deemed suitable by the Management Committee. If through any fault of the home team a match has to be replayed, the Management Committee shall have power to order the venue to be changed.

The Management Committee shall have power to decide whether a pitch and/or facilities are suitable for matches in the Competition and to order the Club concerned to play its fixtures on another ground.

All matches shall have a duration of 90 minutes unless a shorter time [not less than 70 minutes] is mutually arranged by the two captains in consultation with the referee prior to the commencement of the match, and in any event shall be of equal halves.

The times of kick-off shall be fixed by the Management Committee. Unless Clubs mutually agree to an alternative kick-off time, all matches shall commence as follows:

September and October	LEAGUE and CUP 2.30 p.m.
November, December, and January	LEAGUE 2.00 p.m. CUP 1.45 p.m.
1st February to end of season	LEAGUE and CUP 2.30 p.m.

Teams responsible for a late kick-off shall be fined in accordance with item B of the schedule of fines.

Referees must order matches to commence at the appointed time and must report all late starts to the Competition. The home team must provide at least two footballs fit for play and the referee shall make a report to the Competition if the footballs are unsuitable. Goal nets must be used.

[C] Except by permission of the Management Committee all matches must be played on the dates originally fixed but priority shall be given to The Football Association and all relevant County Association and League Cup Competitions. All other matches must be considered secondary. Clubs may mutually agree to bring forward a match with the consent of the Management Committee.

[D] All Home Clubs must confirm arrangements for the match with their opponents and the referee at least THREE days before the match takes place. The Home Club shall also inform their opponents of any change to the appointed Referee, kick-off time, or any other arrangements connected with the match, giving as much notice as possible. Clubs failing to comply shall be fined in accordance with item C of the schedule of fines.

[E] Every Club shall play its best available qualified team or teams in all matches in the Competition. [Note: the intention of this Rule is not to interfere with normal team selection by Clubs, but to prevent Clubs deliberately fielding a weakened team in order to unreasonably reserve players for another game or to boost the strength of another or lower team. It is NOT intended that Clubs MUST field higher team players in lower teams when the higher team has no engagement]. If, in the opinion of the Management Committee, the substance or spirit of the Rule is obviously being disregarded, the Club or Clubs concerned may be called to account for its/their actions and shall be subject to such decisions as the Management Committee may determine, despite the fact that Rule 8 has not been infringed.]

**BEDFORDSHIRE FOOTBALL LEAGUE
SEASON 2007-2008**

In the event of a Club playing in any match with less than nine players they may be fined in accordance with item A of the schedule of fines for each missing player. A minimum of seven players will constitute a team for a Competition match.

[F] Home and away matches shall be played. In the event of a Club failing to keep its engagement the Management Committee shall have power to inflict a fine, deduct points from the defaulting Club, order the defaulting Club to pay any expenses incurred by the opponents, award points, or otherwise deal with them except the award of goals.

Notwithstanding the foregoing home and away provision, the Management Committee shall have power to order a match to be played on a neutral ground or on the opponent's ground if they are satisfied that such action is warranted by the circumstances.

Any Club with more than one team in the Competition shall always fulfil its fixture, within the Competition, in the following order of precedence:- First Team, Reserve Team, A Team. Clubs in breach of this requirement shall be fined a sum not exceeding £75 or otherwise dealt with by the Management Committee.

Any Club unable to fulfil a fixture must, without delay, give notice to the Hon General Secretary or Hon Fixture Secretary, the Competition Hon Referees Secretary, the Secretary of the opposing Club and the match official(s). Any Club failing to comply shall be dealt with by the Management Committee, who may inflict any penalty it may deem suitable.

In the event of a match not being played or abandoned owing to causes over which neither Club has control, it shall be played in its entirety on a date to be mutually agreed by the two Clubs and approved by the Management Committee. Failing such agreement and notification to the Hon General Secretary or Hon Fixture Secretary within 3 days the Management Committee shall have power to order the match to be played on a named date or on or before a given date.

The Management Committee shall review all abandoned matches and in a case where it is to the advantage of the Competition, and does no injustice to either Club, shall be empowered to order the score at the time of the abandonment to stand. In all cases where the Management Committee are satisfied that a match was abandoned owing to the conduct of one team or its Club member[s] they shall be empowered to award the points for the match to the opponents and/or take what other action they may deem necessary. In cases where a match is abandoned owing to the conduct of both teams or their Club members, the Management Committee shall take such action as they consider appropriate. Such action is subject to any disciplinary action taken by the appropriate County Association.

[G] A Club may at its discretion and in accordance with the Laws of the Game use THREE substitute players in any match in this Competition who may be selected from FIVE players. The referee shall be informed of the names of the substitutes not later than ten minutes before the start of the match.

A player who has been selected, appointed or named as a substitute before the start of the match but does not actually play in the game shall not be considered to have been a player in that game within the meaning of Rule 8 of this Competition.

[H] The half time interval shall be of ten minutes duration, but it shall not exceed fifteen minutes. The half time interval may only be altered with the consent of the referee.

REPORTING RESULTS

11. [A] The Hon Registration Secretary must receive within 3 days of the date played, the result of each Competition match in the prescribed manner. This must include the registration number, forename[s] and surname of the team players [in block letters] and also the Referee markings required by Rule 13. Before the start of all matches, each team shall exchange a Match Result Sheet with their opponents, duly completed with the names of their team and the name of the Referee. Failure to do so will incur a fine in accordance with item C of the schedule of fines.

[B] The Home Club shall telephone the result of each match to the Hon Results Secretary within one and a half hours of the end of the match. In the event of a County Cup tie, ALL Clubs must telephone the result. Failure to do so will incur a fine in accordance with item C of the schedule of fines.

**BEDFORDSHIRE FOOTBALL LEAGUE
SEASON 2007-2008**

[C] The match result notification, correctly completed, shall be signed by a responsible member of the Club. A Club which submits an incomplete form or incorrect information not related to the names of the players shall be fined in accordance with item A of the schedule of fines. A Club which deliberately submits a form containing false information with regard to the names of the players of their team shall be fined a sum not exceeding £75 or otherwise dealt with by the Management Committee.

DETERMINING CHAMPIONSHIP

12. [A] Team rankings within the Competition will be decided by points with THREE points to be awarded for a win and ONE point for a drawn match. The teams gaining the highest number of points in their respective Divisions at the conclusion shall be adjudged the winners. Matches must not be played for double points.

In the event of two or more teams being equal on points team rankings may be decided in any one or more of the following ways:-

- [i] goal difference
- [ii] goals scored
- [iii] deciding match[es] played under conditions determined by the Management Committee.

[B] The two bottom Clubs in the Premier Division shall normally be relegated to Division One, and the top two Clubs in Division One shall be promoted to the Premier Division, subject to rule 1. The Management Committee shall then decide the formations of divisions, following the general principle of two up, two down.

[C] In the event of a team not completing its fixtures for the season all points obtained by or recorded against such defaulting team, and all goals for and against, shall be expunged from the Competition table.

[D] A promotion and relegation link exists between the United Counties Football League and the Premier Division of this League. Premier Division Clubs, providing they meet the appropriate grading criteria, will be eligible to make application to the United Counties Football League in accordance with The Pyramid of Junior Football Charter detailed elsewhere in this Handbook.

REFEREES

13. [A] Registered Referees for all matches shall be appointed in a manner approved by the Management Committee and by the sanctioning Association[s].

[B] In the event of the non-appearance of the appointed Referee, or where there is no officially appointed Referee, the Clubs SHALL attend the ground and SHALL agree upon a Referee. A Referee thus agreed upon shall, for that game, have the full powers, status and authority of a registered Referee. This arrangement will make the game that follows a League Match or Cup Tie, as appropriate, and it will be officially recognised as such. The fact that the game was played under these conditions shall be noted on the Match Result Sheet. Clubs failing to comply shall be fined under item D of the schedule of fines.

[C] The Management Committee may, if they consider it desirable, or upon application by the two competing Clubs, appoint Assistant Referees, if available, to any match. Where Assistant Referees are not appointed each Team playing in the Premier Division and Division One shall provide a Club Assistant Referee, qualified as recognised by the Management Committee, or be fined in accordance with item C of the schedule of fines. In all other divisions, each team shall provide a Club Assistant Referee, or be fined in accordance with item C of the schedule of fines.

[D] The appointed Referee shall have power to decide as to the fitness of the ground in all matches and the decision shall be final, subject to either in the case of a ground of a Local Authority or the owners of a ground, the Representative of that body is the sole arbiter and whose decision must be accepted unless the ground is declared fit for play.

[E] Match Officials appointed under this Rule shall be entitled to a fee, which includes all expenses, of £25 Premier and Division One, £22 all other Divisions. Registered Referees appointed by

**BEDFORDSHIRE FOOTBALL LEAGUE
SEASON 2007-2008**

the Management Committee as Assistant Referees £18 and £16 respectively, subject to any limits laid down by the sanctioning Association[s].

The Home Club shall pay the Officials their fees at the conclusion of the match. Clubs failing to comply shall be fined in accordance with item C of the schedule of fines.

[F] In the event of a match not being played because of circumstances over which the Clubs have no control, the Match Officials, if present, shall be entitled to half fee. Where a match is not played owing to one Club being in default, that Club shall be ordered to pay the Officials, if they attend the ground, their full fee.

[G] A Referee not keeping his engagement, and failing to give a satisfactory explanation as to his non-appearance, may have his name removed from the list of Referees and the fact reported to the Association with which he is registered.

[H] Each Club shall, in a manner prescribed from time to time by The Football Association, award marks to the Referee for each match and the name of the Referee and the marks awarded shall be submitted to the Competition on the Match Result Sheet. Clubs failing to comply with this Rule shall be fined in accordance with item C of the schedule of fines.

The Competition shall keep a record of the markings and, by the prescribed date each season and on the Form provided, shall submit a summary to County Association.

CONTINUATION OF MEMBERSHIP OR WITHDRAWAL OF A CLUB

14. [A] After 31st December in the current Season a Club intending, or having a provisional intention, to withdraw a team from the Competition on completion of its fixtures and fulfilment of all other obligations to the Competition must notify the Secretary in writing by 31st March each Season. Provisional notice must be confirmed by 1st May. Clubs failing to comply with this Rule shall be fined in accordance with item D of the schedule of fines.

[B] A Club shall not be allowed to withdraw any or all of its teams from the Competition after the Annual General Meeting for the following Season. Clubs failing to comply with this Rule shall be fined in accordance with item E of the schedule of fines and shall also be liable for its share of any call which may be made under Rule 5[B].

[C] The Membership for the coming season having been confirmed at the Annual General Meeting, the Competition shall have the right, irrespective of other provisions in this Rule, to refuse to permit a Club to withdraw its team[s] in order to join another Competition and may hold the Club to its engagements.

[D] In the event of a Member Club which is an un-incorporated association withdrawing and/or disbanding it shall be immediately liable to discharge all its financial and other obligations to the Competition.

In the event that any such obligation remains undischarged after a period of twenty-one [21] days then such obligation shall be met by the then current Club Members, excluding those under the statutory school leaving age. Until a Member's pro rata obligation is discharged in full the Member shall not be allowed to participate in the Competition, which may apply to the Club's Parent County Association for a suspension order.

PROTESTS AND COMPLAINTS

15. [A][i] All questions of eligibility, qualifications of players or interpretations of the Rules shall be referred to the Management Committee.

[ii] Objections relevant to the dimensions of the pitch, goals, flag posts or other facilities of the venue will not be entertained by the Management Committee unless a protest is lodged with the Referee before the commencement of the match. Any Club lodging such protest and not proceeding with it shall be deemed guilty of a breach of this Rule and shall be dealt with by the Management Committee.

[B] Except in cases where the Management Committee decide that there are special circumstances, protests and complaints regarding matches [which must contain full particulars of the grounds upon which they are founded] must be lodged in writing with the Hon General Secretary within

**BEDFORDSHIRE FOOTBALL LEAGUE
SEASON 2007-2008**

3 days [excluding Sundays] of the match or occurrence to which they refer. A protest or complaint shall not be withdrawn except by permission of the Management Committee. A Club may ask for reconsideration of Management Committee decisions. Such requests must be lodged in writing with the Hon General Secretary before the end of the month in which the meeting was held.

[C] Any dispute occurring between Clubs in the Competition shall be referred for determination by the Management Committee whose decision shall be binding upon all parties subject to Rule 16.

[D] No protest of whatever kind shall be considered by the Management Committee unless the complaining Club shall have deposited with the Secretary a sum of £5. This may be forfeited in whole or in part in the event of the complaining or protesting Club losing its case. The Competition shall have power to order the defaulting Club or the Club making a losing or frivolous protest or complaint to pay the expenses of the enquiry or to order that the costs to be shared by the parties.

[E] All parties to a protest or complaint must be afforded an opportunity to make a statement when the protest or complaint is being heard and must have received 3 days notice of the hearing, together with a copy of the submission. When dealing with a protest or complaint the Management Committee shall take into consideration the possession by the protesting or complaining Club of any information which, if properly used, might have avoided the protest or complaint.

BOARD OF APPEAL

16. Within 14 days of the posting of written notification of any decision of the Management Committee or the Competition a Club, Official or Player against whom action is taken may appeal against such decision by lodging particulars in duplicate with the Secretary of the Bedfordshire Football Association, including a fee set by the Association, for adjudication of a Board of Appeal. The grounds of appeal shall be in accordance with FA Rules. The Board of Appeal may order the appeal fee to be forfeited and shall decide by whom the costs of the appeal shall be borne. The decision of the Board of Appeal is final and binding on all parties concerned.

No appeal can be lodged against a decision taken at an Annual or Special General Meeting unless it is on the grounds of unconstitutional conduct.

EXCLUSION OF CLUBS OR TEAMS, MISCONDUCT, CLUBS, OFFICIALS, PLAYERS

17. [A] At the Annual General Meeting, or Special General Meeting called for the purpose, Notice of Motion having been duly circulated on the Agenda, the accredited delegates present shall have the power to exclude any Club or Team from further membership, which must be supported by more than two-thirds [2/3] of those present and voting. Voting on this point shall be conducted by ballot.

[B] At the Annual General Meeting, or at a Special General Meeting called for the purpose, in accordance with the provisions of Rule 19, the accredited delegates present shall have the power to exclude from further participation in the Competition any Club whose conduct has, in their opinion, been undesirable, which must be supported by more than two-thirds [2/3] of those present and voting. Voting on this point shall be conducted by ballot. A Club whose conduct is the subject of the vote being taken shall be excluded from voting.

[C] Any official or member of a Club proved guilty of either misconduct, other than field offences, or of inducing or attempting to induce a player or players of another Club in the Competition to join them shall be liable to expulsion or such penalty as the General Meeting or Management Committee may decide, and their Club shall also be liable to expulsion in accordance with the provisions of Clauses [A] and [B] of this Rule.

TROPHY:- LEGAL OWNERS, CONDITIONS OF TAKING OVER, AGREEMENT TO BE SIGNED, AWARDS

18. [A] If a Competition be discontinued for any reason a Trophy or any other presentation shall be returned to the Donor, if the conditions attached to it so provide, or if not, dealt with as the sanctioning Association may decide.

[B] The following agreement shall be signed on behalf of the winners of the Cup or Trophy:-

**BEDFORDSHIRE FOOTBALL LEAGUE
SEASON 2007-2008**

“We A _____ and B _____, the Chairman and Secretary of _____ FC, members of and representing the Club, having been declared winners of _____ Cup or Trophy, and it having been delivered to us by the Competition, do hereby on behalf of the Club jointly and severally agree to return the Cup or Trophy, cleaned and in good order, to the Competition Secretary on or before the first day of March in the following year, or be fined under item D of the schedule of fines. If the Cup or Trophy is lost or damaged whilst under our care we agree to refund to the Competition the amount of its current value or the cost of its thorough repair.”

At the close of each Competition awards shall be made to the winners and runners-up if the funds of the Competition permit.

SPECIAL GENERAL MEETINGS

19. Upon receiving a requisition signed by two-thirds of the Clubs in membership the Hon General Secretary shall call a Special General Meeting. The Management Committee may call a Special General Meeting at any time. At least 14 days notice shall be given of either meeting under this Rule, together with an agenda of the business to be transacted at such meeting.

Each Member Club shall be empowered to send two delegates to all Special General Meetings. Each Club shall be entitled to one vote only. Any Member Club failing to be represented at a Special General Meeting shall be fined in accordance with item D of the schedule of fines, subject to Rule 15.

Management Committee members shall be entitled to attend and vote at all Special General Meetings.

ALTERATION TO RULES

20. Alterations shall be made to these Rules only at the Annual General Meeting or at a Special General Meeting specially convened for the purpose called in accordance with Rule 19. Any alteration made during the playing season to the Rule relating to the qualification of players shall not take effect until the following season.

Notice of proposed alterations to be considered at the Annual General Meeting shall be submitted to the Hon General Secretary by 15th March in each year. The proposals, together with any proposals by the Management Committee, shall be circulated to the Clubs by 31st March and any amendments thereto shall be submitted to the Hon General Secretary by 1st May. The proposals and proposed amendments thereto shall be circulated to Clubs with the notice of the Annual General Meeting. A proposal to change a Rule shall be carried if a majority of those present and entitled to vote are in favour.

A copy of the proposed alterations to Rules to be considered at the Annual General Meeting shall be submitted to the Bedfordshire Football Association by 1st April in any year, or within 14 days of any Special General Meeting. Any alterations or additions decided upon at any meeting shall not become operative until the approval of the Association issuing sanction shall have been obtained.

RULES BINDING ON CLUBS

21. Each Member Club shall be deemed to have given its assent to the foregoing Rules and agreed to abide by the decisions of the Management Committee subject to Rule 16. Each Member Club must abide by any issued Football Association Code of Conduct.

**BEDFORDSHIRE FOOTBALL LEAGUE
SEASON 2007-2008**

FINANCE

22. [A] The Management Committee shall determine with which bank or other financial institution the funds of the Competition will be lodged.

[B] All expenditure in excess of £100 shall be approved by the Management Committee. Cheques shall be signed by at least two Officers nominated by the Management Committee. A report on the financial position of the Competition shall be made to the Management Committee at least once every two months.

[C] The financial year of the Competition will end on 31st December. The books, or a certified balance sheet, of a Competition shall be prepared and shall be audited annually by some suitable person[s] who shall be appointed at the Annual General Meeting.

DISSOLUTION OF THE LEAGUE

23. Should it be decided, through force of circumstances, to disband or suspend the League all Clubs then in membership will be held liable for their proportionate share of the League debts. In the event of the League becoming insolvent, a special meeting of the members shall be called at which the position shall be brought to the notice of the Clubs, whose representatives shall decide as to what policy shall be adopted.

In the event of the League being disbanded, trophies held by the Clubs must be returned to the Hon. General Secretary or Chairman appointed by the General Meeting of the Clubs last held in accordance with rule 6, and shall receive possession of the Cups. If it is then found impossible to re-organise the League, these Cups shall be handed over to the Bedfordshire Football Association.

EMERGENCY DECISIONS

24. In the event of any matter arising not covered for in the Rules, which requires immediate settlement and time will not allow for the Management Committee to be summoned, then the Hon. General Secretary, in consultation with the Chairman, shall have the power to give a ruling which shall carry equal weight with a decision given in the ordinary way. Such a special ruling, however, shall only refer to the immediate occasion, and the circumstances shall be reported to the next meeting of the Management Committee. A Standing Committee consisting of the Chairman, Hon. General Secretary, and one other member shall be appointed to deal with any emergency.

SCHEDULE OF FINES

25. A = £10; B = £15 first occurrence; £25 second and subsequent; C = £15; D = £40; E = £75. All fines levied under the above schedule must be paid within fourteen days of notification. Failing this a further fine under item C above will be imposed.

RULES FOR KNOCK-OUT COMPETITIONS

The following rules apply to all cup competitions, BRITANNIA, CENTENARY, DIAMOND JUBILEE, and the WATSON SHIELD except where stated.

Cup Rule 1 The cups shall be competed for annually in the form of knock-out competitions. The BRITANNIA CUP shall be confined to teams from the PREMIER DIVISION. The CENTENARY CUP shall be confined to teams from DIVISION 1. The DIAMOND JUBILEE CUP shall be confined to teams from DIVISION 2. Teams from any other Division shall contest the WATSON SHIELD.

The knock-out competitions shall be under the control and management of the MANAGEMENT COMMITTEE, and its general business arrangements shall be dealt with as a section of the BEDFORDSHIRE FOOTBALL LEAGUE in accordance with the League regulations, except where herein specified to the contrary.

Cup Rule 2 – Qualification of Players All players registered with the League Registration Secretary shall be eligible to represent their Club, but such registration must have been recorded seven days prior to the day on which the match takes place.

**BEDFORDSHIRE FOOTBALL LEAGUE
SEASON 2007-2008**

Cup Rule 3 No player shall be allowed to compete if:

[a] he has played for another Club in the same competition in the same season.

[b] BRITANNIA CUP: Any player who has played in the FA Challenge Cup, FA Challenge Trophy, FA Challenge Vase, or the Bedfordshire FA Senior Challenge Cup in the current season shall be ineligible to play. Each team shall provide a Club Assistant Referee, qualified as recognised by the Management Committee, or be fined in accordance with item C of the schedule of fines.

CENTENARY CUP: as Britannia Cup with the following addition. Any player who has played in the Bedfordshire FA Senior Trophy or Intermediate Cup in the current season shall be ineligible to play. Each team shall provide a Club Assistant Referee, qualified as recognised by the Management Committee, or be fined in accordance with item C of the schedule of fines.

DIAMOND JUBILEE CUP: as Centenary Cup with the following change to the last sentence: Each team shall provide a Club Assistant Referee.

WATSON SHIELD: As Diamond Jubilee Cup.

[c] he has played five or more games in a senior league [see rule 10D] outside the Bedfordshire Football League in the current season, unless a period of 21 days has elapsed since he last played.

Cup Rule 4 The names of all players in the semi-finals and finals must have played in a minimum of five games for the Club he is representing.

Cup Rule 5 – Matches Ties shall be arranged by ballot. In matches up to the final tie the Club drawn first shall have choice of ground, and shall be responsible for all arrangements in connection with the game, and shall account for gate money received.

Cup Rule 6 The duration of each game shall be 90 minutes, but an extra half hour shall be played if the match is undecided at the end of full time. If still undecided after extra time, the tie shall be decided by the taking of penalty kicks in accordance with FA regulations. The Semi-Final and Final Ties shall also be decided in this manner.

Cup Rule 7 – Referees The Referee in each tie shall be appointed by the Management Committee. The fee, which includes all expenses, shall be £25 in the Britannia Cup and Centenary Cup, and £22 in the Diamond Jubilee Cup and Watson Shield. Where Assistant Referees are appointed their fee, which includes all expenses, shall be £18 in all Cups.

Cup Rule 8 - Monies The Referee's fee is to be the first charge after which any money remaining shall be divided equally between the two Clubs.

Cup Rule 9 - Semi-Finals Semi-finals shall be played on the ground chosen by the first named Club. Match Officials fees shall be shared by the competing Clubs. The first named Club shall be responsible for the notification of their opponents, match officials, and for supplying of suitable match balls.

NOTE - PLAYERS MUST BE QUALIFIED AS PER CUP RULE NUMBER 4.

Cup Rule 10 - Finals Finals shall be played on neutral grounds as the Management Committee may decide. The Clubs competing in the Final Tie shall share two-thirds of the money taken at the Final, after match expenses have been deducted.

Cup Rule 11 When funds allow, the Finalists shall receive sixteen mementoes.

Cup Rule 12 - General On all matters connected with the knock-out competitions, The Management Committee of the Bedfordshire Football League shall have full executive power and shall deal with protests in accordance with rule 15.

The Management Committee shall have the power to rule any Club out of the competition where an ineligible player has taken part.

Cup Rule 13 No cup can be won outright, and the winning Clubs shall give a bond as regards their safety.

OFFICIAL LIST OF REGISTERED REFEREES

[AS SUPPLIED BY BEDFORDSHIRE FOOTBALL ASSOCIATION ON 18TH JULY 2007]

For full details of Referees, and those not listed below, please refer to your County FA Handbook.

For additional referees see the regular monthly list of fixtures issued by the League.

ARMSTRONG George	☎01234 822900 or 07775 615112
BALCHIN Graham	☎01582 614635 or 07970 380236
BEAL Tony	☎01234 752194 or 07786 258289
BLACKBURN Alan	☎01582 665542
BOWIE Aaron	☎01234 215248 or 07840 965386
BOWTELL Alan	☎01582 881094
CACCHIO Urbano	☎01234 315364 or 07761 472996
CAMPBELL James	☎01525 716915 or 07736 846505
CAVES Graham	☎01234 354854 or 07817 392377
CLARKE Derek	☎01234 348546
COOPER Spencer	☎01462 700486
COOPER Trevor	☎01234 712664
COSIER Andrew	☎01582 584089
DAHL Nicholas	☎01234 825575 or 07850 899466
DARFI Edwin	☎01234 344662 or 07801 180811
DEANS Mark	☎01767 220859 or 07947 248277
DONNELLAN Tim	☎01525 371553 or 07751 563923
DURNFORD Tony	☎01582 758840
EASTWOOD Peter	☎01582 659154
ENDACOTT Russell	☎01525 402592 or 07793 213221
EVANS Laurie	☎01234 403573 or 07958 632874
FENDER Frank [Berks & Bucks]	☎01908 210457 or 07771 947076
FITZPATRICK Gerry	☎01525 718173 or 07971 959175
HALLETT Kevin	☎07831 771896
HOWARD Darron	☎01462 811433 or 07969 217076
HUMPHRIES Brian	☎01234 840549 or 07802 838809
IVES Mark	☎07904 193289
JOHNSTONE Gerry	☎01234 350834
KABIR Mohammed	☎07904 733502
KEEN Nick	☎01462 711118
KIGHT David Alan	☎01525 221326 or 07799 583311
KNOX Alan	☎01767 261583
KYRIACOS George	☎01234 751709 or 07747 477441
LEGATE Alan	☎01462 732735 or 07745 258785
LEONARD Robert	☎01462 700119 or 07745 467619
LEWIS Noel	☎01582 654356
LIANI Evandro	☎07775 811618

**BEDFORDSHIRE FOOTBALL LEAGUE
SEASON 2007-2008**

MACKAY Robert	☎01462 701780
MARSH Brian	☎01582 570563 or 07816 885316
MAYES Corey	☎01525 715331 or 07984 172380
MEDLOCK Andrew	☎01767 318445 or 07747 032936
MILTON Clive	☎01234 273893
MOORE Colin	☎01582 598490
MUGGERIDGE Brian	☎01234 307891 or 07791 338663
NEMETH Peter	☎01525 752426
O'CONNOR Dr. Steve	☎01234 822544 or 07766 993949
OSBORNE Derek	☎01767 681987 or 07773 355373
PANCONI Jon	☎01582 864595
PARROTT Paul	☎01234 301844 or 07798 833873
PATER Stuart	☎01525 717456 or 07933 633424
PEARCE Keith	☎01234 304384 or 07704 339457
POWELL Leon	☎01234 401018 or 07876 542626
PRICE Fred	☎01908 216321
PRIETZEL Stephen	☎01234 741748
REDMAN Keith	☎01767 224369 or 07799 800950
ROBERTS George	☎01234 772181 or 07971 593802
ROSS Charlie	☎01234 851868 or 07950 596466
ROWLATT Adam	☎01582 876371 or 07940 196317
SLATTER Ken	☎01525 222080
SNAITH David	☎01582 876814 or 07747 780709
TAYLOR Nigel	☎01525 719706 or 07963 304426
THIARRA Suki	☎01234 740210 or 07802 608380
TURTLE Geoffrey	☎01767 262251 or 07710 981983
WILFORD Simon	☎01767 314093 or 07704 486280
WILSON Gary [Sandy]	☎01767 221841 or 07968 702765
WILSON Gary [Lidlington]	☎01525 405014 or 07775 968836
ZIOLKOWSKI Joseph	☎01582 603519

ADDITIONAL REFEREES

[NOT REGISTERED WITH BEDFORDSHIRE FOOTBALL ASSOCIATION BY 18TH JULY 2007]

ASHPOLE Alan	☎01234 768064 or 07753 247424
ANDREWS Geoffrey	☎01767 680695 or 0207860 4956
BEDDALL Marc	☎01234 822936 or 07795 211673
BRINKLER Phil	☎01767 600245 or 07753 891707
CARMAN Nigel	☎01582 898320 or 07729 857073
COOK Fred	☎01234 765322 or 07831662594
COOKE Christian	☎01767 683504 or 07801 433396
CORROON Paul Michael	☎01582 752899
COX Paul	☎07957 486559

**BEDFORDSHIRE FOOTBALL LEAGUE
SEASON 2007-2008**

CROOK Nigel	☎01525 404744 or 07773 128578
DOLAN Gerry	☎01582 752452 or 07850 223948
ELEGUNDE Yemi	☎01582 524805 or 07785 316339
EMMS Adam	☎01234 344150 or 07816 309390
EVERETT Marcel	☎01525 875007 or 07790 694752
FRANKLIN Roger	☎01767 317342
HAMILTON Terry	☎07716 332542
HOWITT Ian	☎01234 765253 or 07774 827543
HUCKLE Ian	☎01234 306287 or 07814 560210
LOWE Simon	☎01234 215693
LUCKRIFT Richard	☎01234 856079 or 07910 843602
MAHER Michael	☎01582 561051 or 07815 750540
O'NEIL Andrew	☎01234 752385
QUIRK Stephen	☎01582 667780 or 07740 406334
REDDINGTON Paul	☎01234 823886 or 07903 123591
RONALD Mark	☎01582 751141 or 07766 508992
SEAMAN David	☎01480 219387
SMITH Peter	☎01582 656096
TAYLOR Colin	☎01908 270157 or 07828 784692
TAYLOR Tom	☎07946 111423
THOMPSON Andrew	☎01908 331631 or 07801 537066
TSATARAKIS Michalis	☎07861 398332
WADE Steve	☎01462 814942 or 07719 326044
WHARTON Aaron	☎01462 819929 or 07810 111943
WILSON Peter	☎01234 782258
ALDOUS Jeffery	☎01462 816039 or 07749 030047
BARNES John	☎01234 313820 or 07931 458961
DAVIS Nathan	☎01234 212384 or 07768 154323
SPENCER Martin	☎01234 215458 or 07956 083433
AJISOLE Babatunde	☎07961 577314
CULLEN John	☎07799 590177 or 01582 2615565
YOUNG Darren	☎07773 763937
HOWARD Darren	☎07969 217076 or 01462 811433
HAKIN Colin	☎01582 432303 or 07835 428440
GEE Tony	☎01582 537663 or 07768 560733
IVES Haley	☎07843 248749
TOM Rotherman	☎07743 111338
DAVID Aylott	☎01525-719739 or 07951 019414
STUART Coker	☎07879 600257

DIRECTORY OF CLUBS

The following directory lists Clubs in alphabetical order. Wherever possible, please contact the Club Secretary on all matters. In cases of emergency, the names and telephone numbers of the Club Chairmen and additional contact names, have been included. **Some Clubs may play in different colours away from home, please let your opponents know if this is to be the case.** The majority of Clubs have dressing rooms with showers. An increasing number have better facilities, including a Clubhouse and Bar. Club Secretaries: Please check with the Home Club regarding the facilities available for your match.



There is also an increasing number of Clubs applying for, and being granted, Adult Club Charter Standard status. The Clubs in the Bedfordshire Football League who have achieved this have the Charter Standard logo adjacent to their details. This shows that the Club has satisfied certain good-practice criteria, indicating that the Club is strong and well organised. The majority of the Clubs in this Competition will also be able to meet the criteria necessary, and the Management Committee encourage all Clubs to achieve Charter Standard.



For further information on the process and the benefits of becoming a Charter Standard Club, please contact the County Development Manager, Kevin England, at the Bedfordshire FA on 01582 567717, or any member of the Bedfordshire FA Development Team or the League Management Committee. The following are Charter Standard Adult Clubs [as at the start of season]:



AFC KEMPSTON TOWN
GREAT BARFORD FC
LUTON BOROUGH FC
RISELEY SPORTS FC
SANDY FC
SHARNBROOK FC
STEVINGTON FC
TURVEY FC
WILSHAMSTEAD FC

AFC KEMPSTON TOWN EAD00446

Hon. Secretary: Gary Ingerson [garyingerson627@aol.com]

59 Ryswick Road, Kempston, Bedfordshire MK42 8SW

☎ 01234 218201 or 07825624455

Chairman: Paul Brown, 31 St Mary's Close, Marston Moretaine, Beds MK43 0QY

☎ 01234 765624 or 07949672259

Other Contact: Doreen Moon [Secretary]

☎ 01234 851503 or 07889893113

Ground: AFC Kempston, Hillgrounds, Kempston

Colours: Red and White shirts, Black shorts and socks

Second Team Colours: Red and White shirts, Black shorts and socks



**BEDFORDSHIRE FOOTBALL LEAGUE
SEASON 2007-2008**

AFC SHILLINGTON EAN00229

Hon. Secretary: Mrs Heather Lovelock [rlovelock@nhc.ac.uk]
75 Shefford Road, Meppershall, Bedfordshire SG17 5LL ☎ 01462 851779 or 07940754253
Chairman: S. Gibbs, 32 Shefford Road, Meppershall, Bedfordshire SG17 5LN
☎ 01462 851417 or 07885417464
Other Contact: Bob Lovelock [Manager] ☎ as Hon. Secretary
Ground: Stondon Recreation Association
Colours: Yellow shirts, Royal Blue shorts, Yellow socks

BEDFORD COLLEGE FC EAD00180

Hon. Secretary: Raj Mandal [rmandal@bedford.ac.uk]
c/o Bedford College, Cauldwell Street, Bedford MK42 9AH ☎ 01234 291717 or 07957880938
Chairman: Mark Brookes, address as Hon Secretary ☎ 01234 291709 or 07917645160
Other Contact: John Guiney [Player-Manager] ☎ 01234 291702 or 07887720907
Ground: Bedford Borough Council [Jubilee Park pitch 2 allocated – check with web site]
Colours: Blue shirts, shorts and socks

BEDFORD S.A. FC EAD00414

Hon. Secretary: Derek McRae [d.mcrae7@ntlworld.com]
78 Miller Road, Bedford MK42 9NZ ☎ 01234 293476 or 07792689936
Chairman: Paul Barron, 12 Chamberlain Way, Raunds, Northants NN9 6UE
☎ 01933 461077 or 07946582821
Other Contact: Robert Andrews [Treasurer] ☎ 01234 309836 or 07967054559
Ground: Cople Playing Field
Colours: Red shirts, Navy shorts, Red socks

BLUE CHIP FC EAD00148

Hon. Secretary: Tom Liptrot [greenpowerranger@hotmail.co.uk]
23 Chelmer Close, Bedford MK41 7YD ☎ 07734499990
Chairman: Chris Smith, Willow Brook, Silsoe Road, Maulden, Beds MK45 2AX ☎ 07799798240
Other Contact: Carl Townsend ☎ 07838818933
Ground: Bedford Borough Council [Russell Park allocated – check with web site]
Colours: Blue shirts, Black shorts and socks

BLUNHAM FC EAD00365

Hon. Secretary: Alan Brown [alan@alanbrownbuilders.com]
168 St Neots Road, Sandy, Bedfordshire SG19 1BS ☎ 01767 699082 or 07813305238
Chairman: Robert Lawrence
31 Haycroft, Wootton, Bedfordshire MK43 9PB ☎ 01234 765752 or 07947129509
Other Contact: Andrew Kirton [Treasurer][andykirton21@hotmail.co.uk]
☎ 01767 261277 or 07717766816
Ground: The Playing Field, Blunham Road, Moggerhanger, Bedfordshire
Colours: Navy and Gold shirts, Navy shorts and socks
Second Team Colours: Gold and Navy shirts, Navy shorts and socks

**BEDFORDSHIRE FOOTBALL LEAGUE
SEASON 2007-2008**

CALDECOTE FC EAD00073

Hon. Secretary: Mike Swales [mickswales@hotmail.com]
2 Ashby Drive, Upper Caldecote, Nr Biggleswade, Bedfordshire SG18 9DJ
☎ 01767 317481 or 07711774129

Chairman: Sid Fage

'Silvermead', Potton Road, Biggleswade, Bedfordshire SG18 0EJ ☎ 01767 312758 or 07855606749

Other Contact: Trevor Pomfrey [Treasurer] ☎ 01767 601709 or 07766318852

Clubhouse ☎ 01767 600236

Ground: The Playing Fields, Harvey Close, Upper Caldecote

Colours: Yellow shirts, Blue shorts, Yellow socks

Second Team Colours: Blue shirts, shorts and socks

'A' Team Colours: Red shirts, Black shorts and socks

CAMPTON FC EAD00385

Hon. Secretary: Michael Frankland [frankland75@aol.com]
2 Mallards Close, Shefford, Bedfordshire SG17 5YS ☎ 07967395628

Chairman: John Chambers

35 Saxon Avenue, Stotfold, Bedfordshire SG5 4DD ☎ 01462 734615 or 07860467137

Other Contact: Roy Hayday [Vice Chairman] ☎ 07713679383

Ground: The Recreation Ground, Rectory Road, Campton

Colours: Navy shirts, shorts and socks

Second Team Colours: Yellow shirts, Black shorts and socks

CLIFTON FC EAD00018

Hon. Secretary: Mark Gearing, 92 London Road, Biggleswade Beds, SG18 8EB ☎ 01767- 226148 or
07748986932

Chairman: Roger Mackay

58 Shefford Road, Clifton, Bedfordshire SG17 5RQ ☎ 01462 812460

Other Contact: Barry King, ☎ 01767-313532 or 07802482302

Ground: The Playing Field, Clifton

Colours: Red and White stripe shirts, Black shorts, White socks

DUNTON FC EAN00357

Hon. Secretary: David Gill [gilly.78@hotmail.co.uk]
27 Dove Close, Sandy, Bedfordshire SG19 2UT ☎ 01767 681699 or 07990785207

Chairman: Barry Morris

25 The Finches, Sandy, Bedfordshire SG19 2UL ☎ 07879615852

Other Contact: Richard Wall [Treasurer] ☎ 07855462044

Ground: Horseshoe Close [off Boot Lane, Dunton]

Colours: Green with White trim shirts, White with Green trim shorts, Green socks

**BEDFORDSHIRE FOOTBALL LEAGUE
SEASON 2007-2008**

ELSTOW ABBEY 06 FC EAD00001

Hon. Secretary: Nicholas Snelson [elstowabbey06fc@mail.com]
14 Newbury House, Kimbolton Road, Bedford MK40 2PD ☎07834955549
Chairman: R J [Dick] Powell
41 Wendover Drive, Bedford MK41 9QY ☎01234 351264 or 07753331654
Other Contact: Graham Norman [Manager] ☎01234 314030 or 07854641745
Ground: Elstow Playing Field, Wilstead Road
Colours: White shirts, Black shorts and socks

EXEL UNITED FC EAD00443

Hon. Secretary: Charlie Kemp 67, Kimble Drive, Bedford, MK41 9SA ☎01234-359844
Chairman: Tim Luddington
77 Hartwell Drive, Kempston, Beds MK42 8UX ☎01234 841819 or 07786527937
Other Contact: [to be advised] ☎
Ground: Bedford Borough Council [Hillgrounds pitch 3 allocated – check with web site]
Colours: Blue shirts, Black shorts, Blue socks

FLITWICK TOWN FC EAD00394

Hon. Secretary: Clive Craig [louise.pearson2@tiscali.co.uk]
67 Millwright Way, Flitwick, Bedfordshire MK45 1BQ ☎01525 719636 or 07845949963
Chairman: Chris Cheshire
17 Nene Road, Flitwick, Bedfordshire MK45 1SF ☎01525 751992 or 07940718848
Other Contact: Robert Chesney [Reserve Team Manager] ☎07970772575
Ground: Flitwick Leisure Centre, Steppingley Road, Flitwick
Colours: Navy Blue shirts, shorts and socks
Second Team Colours: Maroon shirts, shorts and socks

GREAT BARFORD FC EAD00393

Hon. Secretary: Di Ames [dinahames@aol.com]
33 Chapel Field, Great Barford, Bedfordshire MK44 3JT ☎01234 870251 or
07904420735
Chairman: Allan Payn
13 Dothans Close, Great Barford, Bedfordshire MK44 3JS ☎01234 870536
Other Contact: Lee Moore [Manager] ☎01234 871993 or 07759472499
Ground: Bedford Borough Council [Jubilee Park pitch 1 allocated – check with web site]
Colours: Yellow shirts, Blue shorts and socks



CHARTER
STANDARD
CLUBS



HARTWELL FC EAD00

Hon. Secretary: Bertill Queeley
41 Bunyan Road, Kempston, Bedford MK42 8HL ☎07738009722
Chairman: Alistair McDonald [alistairmcdonald112@btinternet.com]
27 Downfield Way, Kempston, Bedford MK42 8UN ☎01234 853432 or 07807302448
Other Contact: Katie McDonald [Secretary] ☎01234 853432
Ground: Bedford Borough Council [Hillgrounds pitch 4 allocated – check with web site]
Colours: Black and White shirts, Black shorts and socks

**BEDFORDSHIRE FOOTBALL LEAGUE
SEASON 2007-2008**

HENLOW FC EAD00330

Hon. Secretary: Brian Cooper [cooperb1974@ntlworld.com]
1 Hartwell Drive, Kempston, Bedford MK42 8US ☎01234 305277 or 07887826374
Chairman: Greg Hall, 4 Clifton Road, Shefford, Bedfordshire ☎01462 816797 or 07766536713
Other Contact: Steve Worboys [Treasurer] ☎01462 834346 or 07850242069
Ground: Henlow Park, Groveside, Henlow Village
Colours: Gold and Navy shirts, Navy with Gold trim shorts and socks

ICKWELL & OLD WARDEN FC EAD00301

Hon. Secretary: Peter Bygraves, 29 Ickwell Green, Nr Biggleswade, Beds SG18 9EE ☎01767 627747
Chairman: Terry Winter, Old Warden Cottage, 2 Warden Road, Ickwell, Bedfordshire SG18 9EL
☎01767 627716 or 07967708817
Other Contact: Peter Faulkner [Treasurer] ☎01767 627517
Ground: Ickwell Green
Colours: Navy Blue with Gold trim shirts, Navy Blue shorts, Navy Blue and Gold socks
Second Team Colours: Light Blue and White shirts, White shorts, Blue and White socks

KEMPSTON FC EAD00423

Hon. Secretary: Patrick Gordon [patrick.gordon1@ntlworld.com]
2 Caister Road, Bedford MK41 0DF ☎07951707101
Chairman: Mark Allan, 208 Castle Road, Bedford MK40 3TG ☎ to be advised
Other Contact: Iggy Powell [Manager] ☎07737995217
Ground: Kempston Hammer Sports & Social Club, 134 High Street, Kempston MK42 7BN
Colours: Red shirts, shorts and socks

KINGS AFC EAD00186

Hon. Secretary: Matthew Fordham [matthew.fordham@ntlworld.com]
58 Plover Way, Bedford MK42 7HU ☎01234 406949 or 07970403036
Chairman: Steven Wilson, 2 Gifford Road, Bedford MK42 0EJ ☎07811459564
Other Contact: Stuart Minty [Manager] ☎07900413080
Ground: King George VI Playing Field, Clapham
Colours: White shirts, Black shorts, White socks

LIDLINGTON UNITED SPORTS EAD00188

Hon. Secretary: Brian Shepherd [lidlington.united@btinternet.com]
22 Lombard Street, Lidlington, Bedfordshire MK43 0RP ☎01525 403616 or 07711152186
Chairman: Mrs Sue Furlong
25 Church Street, Lidlington, Bedfordshire MK43 0RJ ☎01525 402645
Other Contact: Bill Bartlett [1st Team Manager] ☎01525 280198 or 07803597538
Ground: Hurst Grove, Lidlington
Colours: Blue shirts, White shorts, Blue socks
Second Team Colours: White shirts, Blue shorts and socks

**BEDFORDSHIRE FOOTBALL LEAGUE
SEASON 2007-2008**

LUTON BOROUGH FC EAD00164

Hon. Secretary: Taurai Matereke [petermatereke@yahoo.co.uk]
1Seamarks Court, Kingsway, Luton, LU4 8DT ☎01582 666468 or 07766532588
Chairman: Gordon Attwell, 17 Mount Grace Road, Luton, Bedfordshire LU2 8EW
☎01582 611944 or 07764429425

Other Contact: Perkins Matereke [Manager] ☎07930672595
Ground: Luton Regional Sports Centre, St Thomas Road, Stopsley, Luton
Colours: White shirts, Blue shorts and socks



CHARTER
STANDARD
CLUBS



MARABESE CERAMICS FC EAD00350

Hon. Secretary: Guiseppe Ciampa [giuseppe.ciampa@ciampasolicitors.co.uk]
9 Peck Way, Rushden, Northants NN10 6ED ☎07976701058
Chairman: Marcellino Marabese, 3 Windmill Lane, Stevington, Bedfordshire MK43 7QZ
☎01234 823068 or 07888751634

Other Contact: Dino Aceto [Treasurer] ☎07886247562
Ground: Cople Recreation Ground
Colours: Blue shirts, shorts and socks

MARSH LEYS FC EAD00105

Hon. Secretary: Richard Aberly [richx22@aol.com]
22 Albany Court, Stantonbury, Milton Keynes MK14 6DN ☎07818446906
Chairman: Paul Thompson, 2 Beatrice Street, Kempston, Bedford MK42 8AE ☎07967562206
Other Contact: Andrew Breed [Manager] ☎01234 402928 or 07967961788
Ground: Bedford Borough Council [Hillgrounds pitch 3 allocated – check with web site]
Colours: Sky Blue shirts, White shorts and socks

MARSTON SHELTON ROVERS FC EAD00044

Hon. Secretary: David Money, 111 Lower Shelton Road, Lower Shelton,
Marston Moretaine, Bedfordshire MK43 0LW ☎01234 765579
Chairman: Michael Champkin
2 Banks Close, Marston Moretaine, Beds MK43 0MP ☎01234 767306
Other Contact: Mark Champkin [Committee] ☎01234 766617
Ground: Marston Moretaine Playing Fields
Colours: Claret and Blue shirts, Blue shorts and socks

MARSTON SOCIAL FC EAD00344

Hon. Secretary: Beryl Oakley
62 Manor Road, Marston Moretaine, Beds MK43 0PD ☎01234 766552 or 07881452643
Chairman: Robert Oakley [address as Secretary] ☎07952 208387
Other Contact: to be advised ☎
Ground: Marston Moretaine Playing Fields
Colours: Red and Black shirts, Black shorts and socks

**BEDFORDSHIRE FOOTBALL LEAGUE
SEASON 2007-2008**

MELTIS ALBION FC EAD00019

Hon. Secretary: Roy Burnage
19 Eaton Road, Kempston, Bedfordshire MK42 7RP ☎01234 852561
Chairman: Steve Smith, 75 Harrowden Road, Bedford MK42 0RS ☎01234 342814
Other Contact: Mark Murphy [Treasurer] ☎01234 300352
Ground: Meltis Sports Ground, Miller Road, Bedford
Colours: Navy and White shirts, Navy and White shorts, Navy socks

MELTIS CORINTHIANS FC EAD00213

Hon. Secretary: Piotr [Peter] Tubek
60 Ford End Road, Bedford MK40 4JW ☎01234 213235 or 07986969558
Chairman: Roy Elcock, 37 Hazelwood Road, Bedford MK42 0HN ☎01234 211624 or 07768617390
Other Contact: Harjinder Chana [1st Team Manager] ☎01234 857374 or 07889157325
Ground: Meltis Sports Ground, Miller Road, Bedford
Colours: Claret with Amber Trim shirts, shorts, and socks
Second Team Colours: Red and Yellow shirts, Blue shorts, Yellow socks
Second Team Ground: Bedford Borough Council [Jubilee Park pitch 2 allocated – check with web site]

MEPPERSHALL JURASSIC FC EAD00056

Hon. Secretary: Jeffrey Staines [deborah.staines1@btinternet.com]
60 High Street, Meppershall, Bedfordshire SG17 5LY ☎01462 814886 or 07702748601
Chairman: John Wiles
Sandy View, Shefford Road, Meppershall, Bedfordshire SG17 5LL ☎01462 816249
Other Contact: Neil Preston [Treasurer] ☎07798677742
Ground: Bedford Borough Council [Jubilee Park pitch 1 allocated – check with web site]
Colours: Blue shirts, Blue shorts, White socks

MULBERRY BUSH [KEMPSTON] FC EAD00156

Hon. Secretary: Ben Barnes [benbarnes123@yahoo.co.uk]
40 Jowitt Avenue, Kempston, Bedfordshire MK42 8NW ☎01234 405264 or 07766304018
Chairman: Mrs Julie Wilson, Mulberry Bush, Springfield Centre, Kempston, Bedfordshire
☎01234 409299 or 07752681178
Other Contact: Gareth Harry [Vice Chairman] ☎01234 855210 or 07834522176
Ground: Bedford Borough Council [Hillgrounds pitch 2 allocated – check with web site]
Colours: Gold shirts, Black shorts and socks

NEWNHAM ATHLETIC FC EAD00140

Hon. Secretary: Rob Dalby [rob.dalby@scania.com]
18 Croyland Drive, Abbeyfields, Elstow, Bedfordshire MK42 9GH ☎01234 212132 or 07917555696
Chairman: Stephen Hughes
24 Hogarth Close, Wellingborough, Northants NN8 4UG ☎01933 674786 or 07970832437
Other Contact: Matt Young [Assistant Manager] ☎07962218737
Ground: Emmaus Village, School Lane, Carlton, Bedfordshire MK43 7LQ
Colours: White and Sky Blue shirts, Sky Blue shorts, Sky Blue and Dark Blue socks

**BEDFORDSHIRE FOOTBALL LEAGUE
SEASON 2007-2008**

OAKLEY SPORTS FC EAD00161

Hon. Secretary: Gavin Darling (Gdarling@btconnect.com) 138 Putnoe Street, Bedford MK41 8HJ
☎ 01234 359368 or 07876478458

Chairman: Les Riseley, 59 Wingfield Road, Bromham, Bedfordshire MK43 8JY ☎ 01234 824574

Other Contact: Geraldine Skeel [Fixture Secretary] ☎ 01234 406828 or 07986536974

Ground: Oakley Sports and Social Club, Village Hall, Oakley

Colours: Blue shirts, White shorts, Blue socks

Second Team Colours: Grey and Red shirts, Grey shorts, Red socks

POTTON WANDERERS FC [to be advised]

Hon. Secretary: Steven Gurney [stevengurney@btinternet.com]

2 The Paddocks, Potton, Bedfordshire SG19 2QD ☎ 07842144736

Chairman: Melvyn Day, 2 Catherines Close, Potton, Bedfordshire SG19 2PR

☎ 01767 261557 or 07734605877

Other Contact: Lennie Giddings ☎ 07914810855

Ground: Recreation Ground, Mill Lane, Potton

Colours: Black and White Stripes shirts, Black shorts and socks

PUTNOE UNITED FC EAD00141

Hon. Secretary: Jordan Kumar [jordan_mk41@hotmail.com]

1 Strathconon Road, Putnoe, Bedford MK41 0NF ☎ 07766342127 or 01234-294867

Chairman: Richard Knight, 23 Fountains Road, Bedford MK41 8NU ☎ 01234 303061 or 07725868053

Other Contact: Reece Bell [Player] ☎ 01234 313850 or 07999204754

Ground: Woodside Middle School, Church Lane, Bedford

Colours: White with Black Sleeves shirts, Black shorts and socks

REDDINGS WOOD FC EAD00345

Hon. Secretary: Richard Garnham [richardg@bpha.org.uk]

64 Silverdale Street, Kempston, Beds MK42 8BD ☎ 01234 841296 or 07939098234

Chairman: Jeremy Bennett

Chase End, Moor End Road, Radwell, Beds MK43 7HX ☎ 01234 782949

Other Contact: Dave Horne [Treasurer] ☎ 01234 843592 or 07866772719

Ground: Kempston Hammer Sports & Social Club, 134 High Street, Kempston MK42 7BN

Colours: Gold shirts, Black shorts, Gold socks

RENHOLD UNITED FC EAD00112

Hon. Secretary: Keith Harlow

14 High Street, Great Barford, Bedfordshire ☎ 01234 871178

Chairman: Lyn Dimmock, 3 Woodfield Lane, Renhold, Bedfordshire MK41 0LH ☎ 01234 871060

Other Contact: Paul Daniels [Manager] ☎ 01234 307511 or 07899704388

Ground: Renhold Playing Fields

Colours: Blue shirts, shorts and socks

**BEDFORDSHIRE FOOTBALL LEAGUE
SEASON 2007-2008**

RENHOLD VILLAGE FC EAD00113

Hon. Secretary: James Dimmock [jamesdimmock@btinternet.com]
2 The Forge, High Street South, Rushden, Northants NN10 0UF ☎01933 311649 or 07795833961
Chairman: Nigel Kester, 1 Attadale Walk, Elms Farm, Bedford MK41 0NS ☎01234 267910
Other Contact: Graham Kester [Manager] ☎01234 300217 or 07876498459
Ground: Ground: Renhold Playing Fields
Colours: Red and Black shirts, Black shorts and socks

RISELEY SPORTS FC EAD00034

Hon. Secretary: Mrs Lynn Clayton [spursgal50@aol.com]
4 Keysoe Road, Riseley, Bedfordshire MK44 1DF ☎01234 708136 or 07903886512
Chairman: Steve Prowse
Harings Farm Cottages, Knotting Lane, Riseley, Bedfordshire ☎01234 708012
Other Contact: Andrew Gell [Treasurer] ☎01234-708191
Ground: Playing Field, Gold Street, Riseley
Colours: Navy with Tangerine trim shirts, shorts, and socks
Second Team Colours: Yellow/Navy trim shirts, Navy/Yellow shorts, Yellow/Navy socks



CHARTER
STANDARD
CLUBS



ROYAL OAK [KEMPSTON] FC EAD00217

Hon. Secretary: Tony Frampton [tonyframpton@btinternet.com]
92 Chantry Avenue, Kempston, Bedfordshire MK42 7RL ☎01234 854566
Chairman: Jim Urquart, 35 Balliol Road, Kempston, Bedfordshire MK42 7ER ☎01234 840210
Other Contact: Chris Birdsall [Manager] ☎07803047220
Ground: Bedford Borough Council [Hillgrounds pitch 2 allocated – check with web site]
Colours: Green and White Hoops shirts, Green shorts and socks

SAFFRON FC EAD00269

Hon. Secretary: Mohammed Raheem
28 Ouseland Road, Bedford MK40 4XN ☎01234 325254 or 07811151495
Chairman: Kalam Hussain, 1 Abbott Crescent, Kempston, Bedfordshire MK42 7QJ ☎01234 840734
Other Contact: Mohammed Akhlaq [Treasurer] ☎01234 840734 or 07800584415
Ground: Bedford Borough Council [Russell Park allocated – check with web site]
Colours: Black and Navy Blue Stripes shirts, Black shorts, Blue socks

SANDY FC EAD00225

Hon. Secretary: Jackie Hallett [jackie.hallett@btinternet.com]
6 Elmtree Road, Sandy, Bedfordshire SG19 1DS ☎01767 692101
Chairman: Colin Osborne MBE
2 Leeds Smith Drive, Sandy, Bedfordshire SG19 1LU ☎01767 682032 or 07774679948
Contact for Fixtures: Blair Woodward [Fixture Secretary]
☎01767 699843 or 07891375585
Ground: Bedford Road, Sandy SG19 1EL ☎01767 692291
Colours: Royal Blue with Yellow trim shirts, shorts and socks
Second Team Colours: Black and White vertical stripes shirts, Black shorts and socks
'A' Team Ground: Sunderland Road, Sandy [Changing Rooms off Medusa Way SG19 1TH]
'A' Team Colours: Black and White vertical stripes shirts, Black shorts and socks



CHARTER
STANDARD
CLUBS



**BEDFORDSHIRE FOOTBALL LEAGUE
SEASON 2007-2008**

SHARNBROOK FC EAD00089

Hon Secretary: Nicholas Cook [nickcook2000@hotmail.com]
15 Epsom Close, Rushden, Northants NN10 0YQ ☎ 01933 411656 or 07774 612293
Chairman: Peter Butler, 17 Wellpond Close, Sharnbrook, Bedfordshire MK44 1PL
☎ 01234 781712

Other Contact: Mark Singleton [Development Officer] ☎ 01234 781101
Ground: Playing Field, Lodge Road, Sharnbrook
Colours: Blue and Red shirts, Blue shorts, Blue socks



CHARTER
STANDARD
CLUBS



STEVINGTON FC EAD00317

Hon. Secretary: Gareth King [janeoxtonking@aol.com]
17 Burridges Close, Stevington, Bedfordshire MK43 7QE
☎ 01234 826519 or 07810868738

Chairman: Thomas Sherlock
7 Church Road, Stevington, Bedfordshire MK43 7QR ☎ 01234 824798
Other Contact: Shane King [Treasurer] ☎ 01234 824751
Ground: Playing Field, Stevington
Colours: Maroon and Blue shirts, Blue shorts and socks



CHARTER
STANDARD
CLUBS



STEWARTBY VILLAGE FC EAD00

Hon. Secretary: Carl Parker, 16a Woodford Road Watford, Herts, (carl@eyeheight.com)
☎ 01923-782825 or 07989 340033

Chairman: Rob Lacey ☎ 07771668542
Other Contact: George Wheelhouse [Committee Member] ☎ 07761779142
Ground: Stewartby Sports & Social Club
Colours: Light and Dark Blue shirts, Dark Blue shorts, Light Blue socks

TURVEY FC EAD00214

Hon. Secretary: Keith Cockings
Old School House, High Street, Turvey, Beds MK43 8DB
☎ 01234 881419 or 07979976440

Chairman: Pat Melarkey
3 The Row, Cold Brayfield, Olney, Bucks MK46 4HR ☎ 01234 881391
Other Contact: Derek Wadsworth [Treasurer] ☎ 01234 881495
Ground: Stonefields, Grove Road, Turvey
Colours: Orange with Blue trim shirts, Blue shorts and socks



CHARTER
STANDARD
CLUBS



TWINWOODS THISTLE FC EAD00179

Hon. Secretary: Barrie Lee Hannam, 26 Petley Close, Flitwick Beds MK45 1XP [t010101@hotmail.com]
☎ 01525 718058 or 07922 019133

Chairman: Asim Majid, 5 Alburgh Close, Bedford MK42 0HG ☎ 07977753162
Other Contact: Neil Hannam, 01525-752420 or 07851199335 Ground: Hinksley Recreational Ground,
Hinksley Road, Flitwick, Beds, MK45 1HL
Colours: Blue shirts, shorts and socks

**BEDFORDSHIRE FOOTBALL LEAGUE
SEASON 2007-2008**

WESTONING RECREATION CLUB FC EAD00116

Hon. Secretary: Andrew Bassett [andrewb579@aol.com]
53 Park Leys, Harlington, Bedfordshire LU5 6LZ ☎ 01525 876186 or 07982715246
Chairman: Andrew Board, 3 Watson Way, Marston Fields,
Marston Moretaine, Bedfordshire MK43 0RG ☎ 07775 584221
Other Contact: Adrian Wadsworth [Treasurer] ☎ 01525 720420
Ground: Recreation Ground, Greenfield Road, Westoning
Colours: Yellow and Black shirts, Black shorts, Yellow socks
Second Team Colours: Orange and Black shirts, Black shorts, Orange socks

WILSHAMSTEAD FC EAD00222

Hon. Secretary: Jane Wooding [jane@wooding.freeserve.co.uk]
18 Armstrong Close, Wilstead, Bedfordshire MK45 3EJ ☎ 01234 740165
Chairman: James Struthers
15 Howard Close, Wilstead, Bedfordshire MK45 3JW ☎ 01234 743513
Other Contact: Matt Stevens [1st Team Manager] ☎ 07811105822
Ground: Jubilee Playing Field, Bedford Road, Wilstead
Colours: Blue and Black stripes shirts, Black shorts and socks
Second Team Colours: Green and White hoops shirts, Black shorts and socks



CHARTER
STANDARD
CLUBS



WOBURN FC EAD00331

Hon. Secretary: Mark James Godleman (mark.godleman@sky.com)
21 Gardeners Close, Maulden, Bedfordshire MK45 2DY ☎ 07774138287[B] or 07967107191
Chairman: John Payne
68 Station Road, Bow Brickhill, Milton Keynes MK17 9JT ☎ 01908 647424 or 07715714230
Other Contact: Andrew Ballerin [Club Sponsor and Player] ☎ 01908 640116
Ground: Woburn Village Hall, Crawley Road, Woburn
Colours: Royal Blue shirts, shorts and socks
Second Team Colours: Blue shirts, shorts and socks

**BEDFORDSHIRE FOOTBALL LEAGUE
SEASON 2007-2008**

FINAL LEAGUE TABLES 2006-2007

PREMIER DIVISION	P	W	D	L	F	A	GD	Pts
Westoning Recreation Club	30	22	2	6	75	36	39	68
AFC Kempston Town	30	19	5	6	83	46	37	62
Blunham	30	18	4	8	64	42	22	58
Campton	30	17	6	7	79	43	36	57
Sandy	30	17	5	8	70	44	26	56
Ickwell & Old Warden	30	15	7	8	82	45	37	52
Caldecote	30	14	8	8	63	51	12	50
Wilshamstead	30	11	10	9	69	55	14	43
Henlow	30	11	8	11	54	40	14	41
Luton Borough	30	11	6	13	75	60	15	39
Oakley Sports	30	9	6	15	50	70	-20	33
Riseley Sports	30	9	5	16	51	75	-24	32
Sharnbrook	30	9	1	20	40	76	-36	28
Goldington Lions	30	7	3	20	47	85	-38	24
Bedford S.A.	30	5	3	22	39	98	-59	18
Turvey	30	5	3	22	28	103	-75	18

DIVISION ONE	P	W	D	L	F	A	GD	Pts
Meltis Corinthians	28	25	2	1	139	33	106	77
Woburn	28	22	2	4	99	31	68	68
Flitwick Town	28	16	5	7	87	52	35	53
Reddings Wood	28	16	3	9	75	47	28	51
AFC Kempston Town Reserves	28	15	5	8	71	48	23	47
Caldecote Reserves	28	15	4	9	77	56	21	46
Campton Reserves	28	13	6	9	65	44	21	45
Stevington	28	11	5	12	65	67	-2	38
Kempston	28	9	4	15	58	87	-29	31
Blunham Village	28	10	3	15	57	72	-15	30
Royal Oak Kempston	28	7	6	15	45	64	-19	27
Elstow Abbey	28	8	2	18	40	75	-35	26
Marston Social	28	6	2	20	37	93	-56	20
Saffron	28	6	3	19	43	91	-48	18
Meppershall Jurassic	28	3	4	21	28	126	-98	13

Wednesday, 18 April 2007: Flitwick Town v Caldecote Reserves [-3 points] - Home Win was awarded

Wednesday, 25 April 2007: [-3 points] Saffron 0 v 4 Blunham Village

Saturday, 05 May 2007: [-3 points] Blunham Village 0 v 1 Elstow Abbey

Saturday, 05 May 2007: Saffron v AFC Kempston Town Reserves [-3 points] - Home Win was awarded

**BEDFORDSHIRE FOOTBALL LEAGUE
SEASON 2007-2008**

DIVISION TWO	P	W	D	L	F	A	GD	Pts
Westoning Recreation Club Res	28	19	7	2	100	34	66	64
Sandy Reserves	28	19	5	4	76	24	52	62
Meppershall Jurassic Reserves	28	17	7	4	103	41	62	56
Woburn Reserves	28	15	7	6	85	55	30	52
Great Barford	28	13	8	7	55	39	16	47
Blunham Reserves	28	13	6	9	83	70	13	45
Marston Shelton Rovers	28	12	7	9	76	49	27	43
Potton Wanderers	28	12	4	12	83	82	1	37
Lidlington United Sports	28	10	6	12	67	84	-17	36
Newnham Athletic	28	9	8	11	51	58	-7	35
Mulberry Bush	28	10	5	13	62	85	-23	35
Bedford Albion	28	8	2	18	61	78	-17	26
Russell Park United	28	8	2	18	62	82	-20	26
Twinwoods Thistle	28	5	5	18	49	104	-55	17
Exel United	28	0	1	27	44	172	-128	1

Saturday, 17 February 2007: Mulberry Bush 3 v 1 Potton Wanderers [-3 points]

Saturday, 17 February 2007: [-3 points] Twinwoods Thistle 0 v 7 Marston Shelton Rovers

Wednesday, 25 April 2007: [-2 points] Meppershall Jurassic Reserves 3 v 0 Blunham Reserves

DIVISION TWO	P	W	D	L	F	A	GD	Pts
Ickwell & Old Warden Reserves	28	22	2	4	91	28	63	68
Oakley Sports Reserves	28	21	4	3	83	34	49	67
Henlow Reserves	28	20	3	5	98	37	61	63
Putnoe United	28	17	7	4	94	43	51	58
Clifton	28	15	7	6	107	51	56	52
Kings AFC	28	14	3	11	85	74	11	45
Sandy 'A'	28	12	3	13	57	64	-7	39
Meltis Corinthians Reserves	28	10	8	10	53	53	0	38
Caldecote 'A'	28	11	5	12	64	66	-2	38
Marsh Leys	28	9	4	15	62	76	-14	31
Wilshamstead Reserves	28	9	4	15	49	64	-15	31
Flitwick Town Reserves	28	8	2	18	38	84	-46	26
Blue Chip	27	5	3	19	36	97	-61	18
Riseley Sports Reserves	28	3	3	22	48	97	-49	12
Lidlington United Sports Reserves	27	3	2	22	30	127	-97	5

Saturday, 21 April 2007: Oakley Sports Reserves v Lidlington United Sports Reserves [-3 points] - Home Win

Thursday, 03 May 2007: [-3 points] Lidlington United Sports Reserves v Ickwell & Old Warden Reserves - Away Win

Saturday 5th May 2007: Lidlington United Sports v Blue Chip - Match not played.

BEDFORDSHIRE FOOTBALL LEAGUE
SEASON 2007-2008

LEAGUE CUPS

BRITANNIA
WESTONING RECREATION CLUB
CENTENARY
MELTIS CORINTHIANS
DIAMOND JUBILEE
WESTONING RECREATION CLUB RESERVES
WATSON SHIELD
CLIFTON

BEDFORDSHIRE FA CUPS

JUNIOR CUP
MELTIS CORINTHIANS

CLUB ASSISTANT REFEREE AWARDS

KEITH COCKINGS [TURVEY FC]
JOHN VALLOM [ICKWELL & OLD WARDEN FC]
NIGEL PRESLAND [CALDECOTE RESERVES]

PREMIER DIVISION ENTRY REQUIREMENTS

The Football Association are currently reviewing the requirements for grounds of Clubs in the National League System. The Bedfordshire Football League has been placed at STEP 7 of the National System, and it is the requirements for ground facilities at this level that is particularly difficult to establish.

The League Management Committee will expect all Clubs in the PREMIER DIVISION to meet the requirements of the Football Association in due course. All Clubs playing in the Premier Division will be expected to provide good sized, separate dressing rooms for each team and for the referee. Washing and toilet facilities will also be mandatory, as will the need to provide refreshments at half time and at the end of the match. **Agreements on Pitch Barriers have yet to be finalised, but for season 2007-2008 all Premier Division Clubs are to rope off at least one touchline, in accordance with instructions from the League Management Committee. In addition, all Premier Division Clubs are to mark Technical Areas in the area adjacent to the half way line, leaving sufficient space for the Assistant Referee to operate.** There is no current requirement to install Trainers Boxes, though Clubs are encouraged to do so.

**BEDFORDSHIRE FOOTBALL LEAGUE
SEASON 2007-2008**

LEAGUE RECORDS

FIRST DIVISION

JUBILEE CHALLENGE CUP 1904

1904-05 Queens Park Excelsior	Luton Clarence 1905-06
1906-07 Luton Clarence	Kempston Rovers 1907-08
1908-09 Kempston Rovers	Luton Clarence 1909-10
1910-11 Luton Clarence	Luton Clarence 1911-12
1912-13 Luton Amateurs	No Competition 1913-19
1919-20 Beds & Herts Depot	Woburn & Woburn Sands United 1920-21
1921-22 RAF Henlow Depot	Waterlows Athletic 1922-23
1923-24 Waterlows Athletic	Waterlows Athletic 1924-25
1925-26 Waterlows Athletic	
1926-27 Joint Holders: Bedford Town reserves and Queens Park Rangers	
1927-28 Stony Stratford	Wootton Blue Cross 1928-29
1929-30 Elstow Abbey	Forder's Elstow 1930-31
1931-32 Langford	Queens Park Rangers 1932-33
1933-34 Wootton Blue Cross	Sandy Albions 1934-35
1935-36 Marston Shelton	Marston Shelton 1936-37
1937-38 Marston Shelton	Marston Shelton 1938-39
1939-46 No Competition	Sandy Albions 1946-47
1947-48 Harrold United	Shefford Town 1948-49
1949-50 Langford	Great Barford 1950-51
1951-52 Lidlington United	RAF Brampton 1952-53
1953-54 Stevington	Clapham Sports 1954-55

RE-ALLOCATED 1956 - PREMIER DIVISION

1955-56 Beds & Herts Regiment	GF United 1956-57
1957-58 Stevington	Kempston Rovers reserves 1958-59
1959-60 Pottton United reserves	Kempston Rovers reserves 1960-61
1961-62 Shefford Town reserves	No Competition: 'The Big Freeze' 1962-63
1963-64 Clapham Sports	Ickwell & Old Warden 1964-65
1965-66 Bedford North End	Aspley Guise 1966-67
1967-68 Diemer & Reynolds	Ickwell & Old Warden 1968-69
1969-70 Haynes	Haynes 1970-71
1971-72 Moggerhanger	Everton United 1972-73
1973-74 Queens Athletic	Queens Athletic 1974-75
1975-76 Haynes	Queens Athletic 1976-77
1977-78 Bedford Park Wanderers	Queens Athletic 1978-79
1979-80 Bedford Park Wanderers	Queens Athletic 1980-81
1981-82 Queens Athletic	Queens Athletic 1982-83
1983-84 Queens Athletic	St Cuthberts 1984-85
1985-86 Allens	Bedford Falcons 1986-87
1987-88 Cotton End	Cotton End 1988-89
1989-90 Cotton End	Cotton End 1990-91
1991-92 Ickwell & Old Warden	Cotton End 1992-93

Original Jubilee Challenge Cup [1904] taken out of general circulation at the end of season 1992-1993, to be replaced by a new trophy. The new trophy was presented

BEDFORDSHIRE FOOTBALL LEAGUE
SEASON 2007-2008

to the League by The Duke Inn, Kempston. The Jubilee Challenge Cup was placed in the safe keeping of the Borough of Bedford on 21st June 1995. The Cup was accepted by His Worship the Mayor, Cllr. Malcolm Evans, at the League A.G.M. held that evening.

THE PREMIER CUP 1993

1993-94 Dunton	Biggleswade United 1994-95
1995-96 Biggleswade United	Caldecote 1996-97
1997-98 Blunham	Caldecote 1998-99
99-2000 Caldecote	Caldecote 2000-01
2001-02 Caldecote	North Park Rangers 2002-03
2003-04 Elstow Abbey	Caldecote 2004-05
2005-06 Caldecote	Westoning Recreation Club 2006-07

DIVISION ONE

IGRANIC CHALLENGE BOWL 1956

1955-56 Bletsoe	Stevington 1956-57
1957-58 Bletsoe	Clapham Sports 1958-59
1959-60 Renhold United	Elstow Abbey 1960-61
1961-62 Clifton	No Competition 'The Big Freeze' 1962-63
1963-64 Ickwell & Old Warden	Great Barford 1964-65
1965-66 Queens Park United	Amphill Town reserves 1966-67
1967-68 Cranfield United	Amphill Athletic 1968-69
1969-70 Lidlington United	Lidlington United 1970-71
1971-72 Renhold United	Nicholls Athletic 1972-73
1973-74 Marston Shelton	Bromham United 1974-75
1975-76 Clapham Sports	Hunting Athletic 1976-77
1977-78 Wilstead Wanderers	Bedford Young Indians 1978-79
1979-80 Bedford United	Claypot Athletic 1980-81
1981-82 Bromham United	White City 1982-83
1983-84 Cotton End	AFC Stanley 1984-85
1985-86 Campton	Clapham Sports 1986-87
1987-88 Marston Shelton	Wootton United 1988-89
1989-90 Blunham	Caldecote 1990-91
1991-92 Biggleswade United	Elstow Abbey 1992-93
1993-94 Caldecote	Riseley Sports 1994-95
1995-96 Wootton United	Bromham United 1996-97
1997-98 Cranfield Village	North Park Rangers 1998-99
99-2000 Stevington	Campton 2000-01
2001-02 Elstow Abbey	Golden Lion 2002-03
2003-04 Turvey	Three Horseshoes Renhold 2004-05
2005-06 Henlow	Meltis Corinthians 2006-07

DIVISION TWO

GALLETLY CUP 1920

1919-20 Queens Park Rangers	Sharnbrook 1920-21
1921-22 Harrold	Sandy Albions reserves 1922-23
1923-24 Goldington	Harrold United 1924-25

**BEDFORDSHIRE FOOTBALL LEAGUE
SEASON 2007-2008**

1925-26 Queens Park Rangers	Eynesbury Rovers 1926-27
1927-28 St. Neots & District reserves	Potton Town 1928-29
1929-30 Harrold United	Eynesbury Rovers 1930-31
1931-32 Eynesbury Rovers	Marston Shelton 1932-33
1933-34 Kempston Rovers	Marston Rovers 1934-35
1935-36 Elstow Abbey	Wootton Blue Cross reserves 1936-37
1937-38 Britannia Works	Green End United 1938-39
1939-46 No Competition	St. Neots St. Marys 1946-47
1947-48 Great Barford	Haynes Athletic 1948-49
1949-50 Stevington	Lidlington 1950-51
1951-52 Woburn Athletic	Stondon Athletic 1952-53
1953-54 Beds & Herts Regiment	Bletsoe 1954-55
1955-56 Sharnbrook	Carlton Athletic 1956-57
1957-58 Renhold United	RBS & Hopkirks 1958-59
1959-60 Wyboston	Sharnbrook 1960-61
1961-62 Bedford Wanderers	No Competition 'The Big Freeze' 1962-63
1963-64 Flitton & Greenfield	Goldington United 1964-65
1965-66 Everton United	Haynes 1966-67
1967-68 Ampthill Athletic	Bedford Park Wanderers 1968-69
1969-70 Goldington United	Flitton & Greenfield 1970-71
1971-72 Haylands O.B.	Cotton End 1972-73
1973-74 Bedford Falcons	Dunton 1974-75
1975-76 Northside Athletic	Wilstead Wanderers 1976-77
1977-78 Marston Shelton	Biggleswade Town reserves 1978-79
1979-80 Clapham Sports reserves	Elstow Abbey 1980-81
1981-82 White City	Cotton End 1982-83
1983-84 Granada Rentals	Goldington Electric 1984-85
1985-86 Allens	Wootton United 1986-87
1987-88 Ickwell & Old Warden	Smiths Sports 1988-89
1989-90 Ickwell & Old Warden reserves	Biggleswade United 1990-91
1991-92 Elstow Abbey	Brickhill Tigers 1992-93
1993-94 White Horse	Blunham 1994-95
1995-96 St Cuthberts	Cranfield Village 1996-97
1997-98 Stevington	Renhold United 1998-99
99-2000 Thurleigh Casuals	Cranfield United 2000-01
2001-02 Golden Lion	Flitwick Town 2002-03
2003-04 Biggleswade United 'A'	Denbigh Hall S&S Club 2004-05
2005-06 Marston Social	Westoning Recreation Club reserves 2006-07

DIVISION THREE CUP 1994

Presented by Mr & Mrs T.M.Sadler

1994-95 Corinthians	Dunton reserves 1995-96
1996-97 Potton Town	Renhold United 1997-98
1998-99 Campton reserves	Royal Oak Kempston 99-2000
2000-01 North Park Rangers reserves	2001-02 MK Wanderers
2002-03 to 2005-06 No Division Three Competition	
2006-07 Ickwell & Old Warden reserves	

**BEDFORDSHIRE FOOTBALL LEAGUE
SEASON 2007-2008**

**DIVISION FOUR
EXECUTIVE CUP 1970**

1970-71 Hunting Athletic	Tempsford 1971-72
1972-73 KS Mewa	Northside Athletic 1973-74
1974-75 Cople	Everton 1975-76
1976-77 Bedford West Indians	BETA reserves 1977-78
1978-79 Elstow Abbey	USACLI 1979-80
1980-81 Allens reserves	Wootton United 1981-82
1982-83 Wilshamstead reserves	CIT 1983-84
1984-85 Foresters Arms	Westoning reserves 1985-86
1986-87 Cotton End reserves	Ickwell & Old Warden reserves 1987-88
1988-89 Riseley Sports	Cotton End reserves 1989-90
1990-91 Marston Shelton Rovers reserves	Bedford SA 1991-92
1992-93 Bow Brickhill	Clifton 1993-94
1994-95 Dunton reserves	Woburn reserves 1995-96
1996-97 Campton reserves	Royal Oak Kempston 1997-98
1998-99 Thurleigh Casuals	Wilshamstead 99-2000
2000-01 Blunham Village	Oakley Sports reserves 2001-02

RE-ALLOCATED 2002 – ASSOCIATE DIVISION ONE

2002-03 Dunton reserves	Elstow Abbey reserves 2003-04
2004-05 Bedford SA reserves	Caldecote reserves 2005-06
2006-07 No competition	

DIVISION FIVE

PRESIDENTS CUP 1969 Presented by Mr & Mrs H.Rutter

1968-69 Cotton End United	Westfield Youth Club 1969-70
1970-71 Haynes reserves	Renhold reserves 1971-72
1972-73 ERCU	Cople 1973-74
1974-75 Kempston Green End	Great Barford 1975-76
1976-77 BETA reserves	Mulberry Sports 1977-78
1978-79 USACLI	St Cuthberts reserves 1979-80
1980-81 Cotton End	White City reserves 1981-82
1982-83 Cotton End reserves	Brickhill Tigers 1983-84
1984-85 Campton reserves	AFC Stanley reserves 1985-86
1986-87 Riseley Sports	Goldington Sportsman 1987-88
1988-89 Marston Shelton Rovers reserves	Lidlington United reserves 1989-90
1990-91 Kempston Town	Tempsford 1991-92
1992-93 Hunting Athletic reserves	Haynes 1993-94
1994-95 Golden Lion	Olympus Sports 1995-96
1996-97 Renhold United	Elstow Abbey reserves 1997-98
1998-99 Wilshamstead	Meppershall Jurassic 99-2000
2000-01 Bedford SA reserves	Westoning reserves 2001-02

**BEDFORDSHIRE FOOTBALL LEAGUE
SEASON 2007-2008**

RE-ALLOCATED 2002 – ASSOCIATE DIVISION TWO

2002-03 Meltis Sports Ickwell & Old Warden reserves 2003-04
2004-05 Woburn reserves Exel United 2005-06
2006-07 No competition

BRITANNIA CUP 1948

1948-49 Shefford Town	Langford 1949-50
1950-51 RAF Henlow Joint Holders: Clapham Sports and Stevington	1951-52
1952-53 RAF Brampton	Clapham Sports 1953-54
1954-55 Clapham Sports	Bletsoe 1955-56
1956-57 Bedford North End	Kempston Rovers reserves 1957-58
1958-59 Kempston Rovers reserves	Potton United reserves 1959-60
1960-61 Shefford Town reserves	Bedford Avenue 1961-62
1962-63 Eaton Socon	Moggerhanger United 1963-64
1964-65 Haynes	Campton 1965-66
1966-67 Clapham Sports	Diemer & Reynolds 1967-68
1968-69 Ampthill Athletic	Haynes 1969-70
1970-71 Lidlington United	Queens Athletic 1971-72
1972-73 Everton United	Ickwell & Old Warden 1973-74
1974-75 Haynes	Moggerhanger United 1975-76
1976-77 Queens Athletic	Westoning 1977-78
1978-79 Bedford Park Wanderers	Bedford Young Indians 1979-80
1980-81 Bedford Young Indians	Claypot Athletic 1981-82
1982-83 Clapham Sports	Queens Athletic 1983-84
1984-85 Queens Athletic	St Cuthberts 1985-86
1986-87 USACLI	Eaton Socon 1987-88
1988-89 Cotton End	Fairfield Social 1989-90
1990-91 Smiths Sports	Wilshamstead 1991-92
1992-93 No Competition 'The Wet Winter'	Biggleswade United 1993-94
1994-95 Biggleswade United	Biggleswade United 1995-96
1996-97 Caldecote	Blunham 1997-98
1998-99 Caldecote	St Cuthberts 99-2000
2000-01 Blunham	Caldecote 2001-02
2002-03 Elstow Abbey	Caldecote 2003-04
2004-05 Campton	Caldecote 2005-06
2006-07 Westoning Recreation Club	

AUBREY TINGEY MEMORIAL CUP 1972

1972-73 Cotton End	Dunton 1973-74
1974-75 Arlesey Youth Club	Northside Athletic 1975-76
1976-77 Marston Shelton	Bedford Queens Works 1977-78
1978-79 Cutler Hammer	Queens Athletic reserves 1979-80
1980-81 White City	White City 1981-82
1982-83 Cotton End	Westoning 1983-84
1984-85 Westoning	Wootton United 1985-86
1986-87 Blunham	Lidlington United Sports 1987-88
1988-89 Biggleswade United	Lidlington United Sports 1989-90
1990-91 Lidlington United Sports	Riseley Sports 1991-92
1992-93 No Competition 'The Wet Winter'	Bow Brickhill 1993-94
1994-95 Sandy Town	Rushden Rangers 1995-96

**BEDFORDSHIRE FOOTBALL LEAGUE
SEASON 2007-2008**

1996-97 Duke Inn Sports	Henlow 1997-98
1998-99 Renhold United	Royal Oak Kempston 99-2000
2000-01 Royal Oak Kempston	Lidlington United Sports 2001-02
2002-03 Golden Lion	Three Horseshoes Renhold 2003-04
2004 Trophy Withdrawn	

CENTENARY CUP 2004

2004-05 Three Horseshoes Renhold	Henlow 2005-06
2006-07 Meltis Corinthians	

JUBILEE CUP 1965

1965-66 St Neots St Mary's	Haynes 1966-67
1967-68 Wyboston United	Dunton 1968-69
1969-70 Clifton	Tempsford 1970-71
1971-72 Queens Athletic reserves	Northside Athletic 1972-73
1973-74 Arlesey Youth Club	Clapham Sports reserves 1974-75
1975-76 Renhold reserves	Bedford West Indians 1976-77
1977-78 Woburn reserves	Elstow Abbey 1978-79
1979-80 White City	Allens reserves 1980-81
1981-82 Goldington Electric	Westoning reserves 1982-83
1983-84 Blunham	Brickhill Tigers 1984-85
1985-86 Haynes	KC Sports 1986-87
1987-88 Riseley Sports	Riseley Sports 1988-89
1989-90 Biggleswade Town 'A'	Biggleswade United reserves 1990-91
1991-92 Kempston Town	No Competition 'The Wet Winter' 1992-93
1993-94 Clifton	North Park Rangers 1994-95
1995-96 Woburn reserves	Olympus Sports 1996-97
1997-98 Ickwell & Old Warden reserves	Thurleigh Casuals 1998-99
99-2000 Wilshamstead	Woburn reserves 2000-01
2001-02 Bedford SA reserves	Corinthians 2002-03
2003-04 Duke Sports	Denbigh Hall S&S Club 2004-05
2005-06 Marston Social	Westoning Recreation Club reserves 2006-07

WATSON SHIELD 2002

2002-03 Dunton reserves	2003-04 Stevington reserves
2004-05 Caldecote reserves	Caldecote reserves 2005-06
2006-07 Clifton	

MANAGEMENT COMMITTEE MEETING DATES

2007 September 6, October 4, November 1, December 6

2008 January 3, February 7, March 6, April 3, May 1, June 5

ANNUAL GENERAL MEETING 2008

Wednesday June 18

REGULATIONS FOR THE ESTABLISHMENT AND OPERATION OF THE NATIONAL LEAGUE SYSTEM

1. INTRODUCTION

The National League System (NLS) shall comprise a system by which promotion and relegation links shall exist between participating leagues (the "Leagues") and shall be operated in accordance with these regulations.

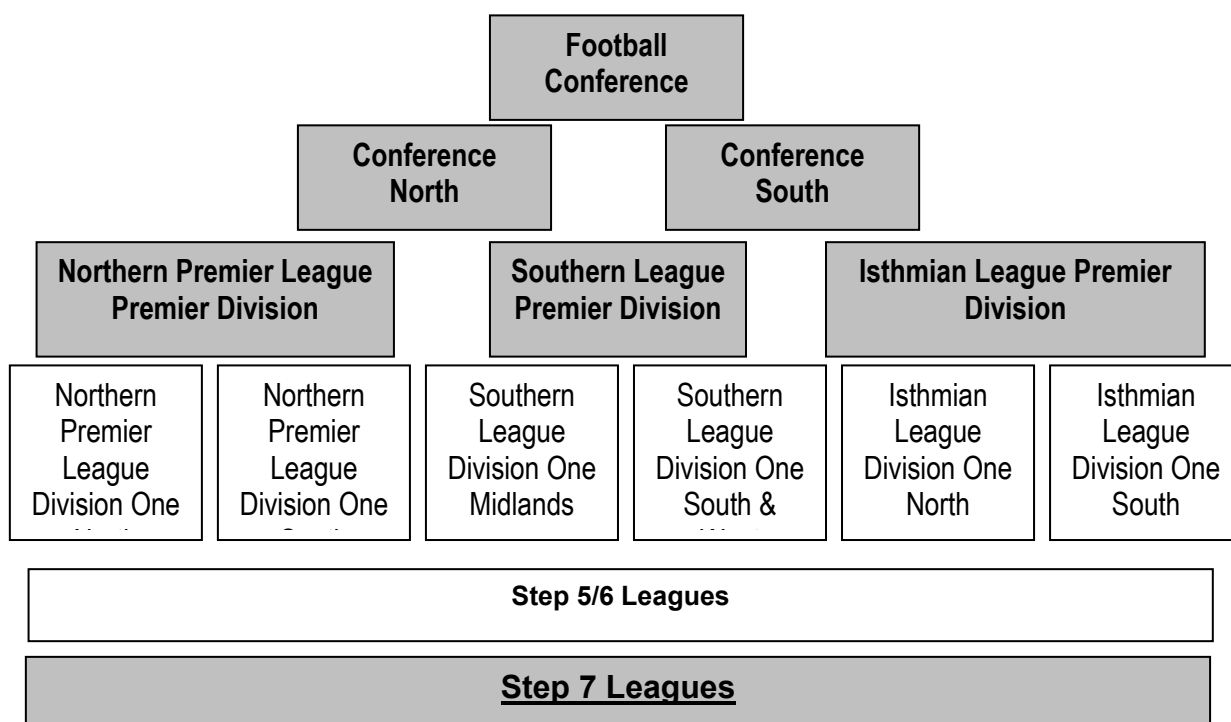
The aims and objectives of the NLS are:

- (a) To provide clubs with a level of competitive football appropriate to their playing ability, stadium/ground facilities, economic means and geographical location.
- (b) To provide a framework for discussion on matters of policy and common interest to leagues and clubs.
- (c) To allow the seasonal movement of clubs.

To be members, all leagues, and clubs (the "Clubs") participating from time to time in such leagues, shall be bound by these regulations. All member leagues will be required to sign a certificate confirming their agreement to the acceptance of the Regulations on an annual basis.

2. POSITION OF A LEAGUE IN THE NATIONAL LEAGUE SYSTEM

2.1 The current structure of the NLS is set out below:



The leagues currently at Step 5, 6 and 7 are set out in the attachment to these regulations, and a review is underway.

**BEDFORDSHIRE FOOTBALL LEAGUE
SEASON 2007-2008**

- 2.2 Any league wishing to become part of the NLS must advise The Football Association in such form and/or providing such information as shall be required by the Leagues Committee ("LC") from time to time. The decision as to whether or not a league should be admitted to, and if admitted, their position in the NLS shall be made by the LC.
- 2.3 Any league wishing to propose an adjustment to its position within the NLS must apply in writing to the LC by 31st December in any year for such proposal to be determined by the LC in order, if approved, to have effect in the season commencing in the following calendar year.

3. RULES AND REGULATIONS FOR PROMOTION AND RELEGATION

- 3.1 The NLS shall provide for the seasonal promotion, relegation or lateral movement of clubs between Steps within the system. A league that signifies its acceptance to be bound by these regulations must be in a position to promote and relegate clubs at the conclusion of each season.

4. DETAILED PROMOTION AND RELEGATION ISSUES

- 4.1 Eligibility criteria shall be agreed by the LC. Details of the ground grading requirements at each Step are contained in the National Ground Grading Document as published by The Football Association.
- 4.2 It may be necessary from time to time to move clubs laterally between leagues at the same Step to accommodate the movement of clubs by normal promotion and relegation. Where this is necessary, no club will be asked to move more than once in every three seasons unless it requests such a move.
- 4.3 At the conclusion of each season, the following procedures will apply:

Step 1 and Step 2

The clubs finishing in the bottom four places at Step 1 at the end of the playing season will be relegated to a feeder pool and placed in the most geographically appropriate division at Step 2. They will be replaced by the clubs finishing in 1st position in each of the divisions at Step 2 together with a further two clubs which win a series of play off matches involving those clubs finishing in a play-off position (normally positions 2 to 5) in each of the divisions at Step 2. In exceptional circumstances where a club in positions 2 to 5 does not meet the criteria to enter the play-offs they should be replaced by a club finishing in the next eligible position. Clubs finishing below position 7 would not be considered.

Step 2 and Step 3

The clubs in the bottom three places in each of the two divisions at Step 2 at the end of the playing season will be relegated to a feeder pool and placed in the most geographically appropriate division at Step 3. They will be replaced by the clubs finishing in 1st position in each of the divisions at Step 3 together with a further three clubs determined by a series of play off matches involving those clubs finishing in a play-off position (normally positions 2 to 5) in each of the divisions at Step 3. In exceptional circumstances where a club in positions 2 to 5 does not meet the criteria to enter the play-offs they should be replaced by a club finishing in the next eligible position. Clubs finishing below position 7 would not be considered. The promoted clubs

**BEDFORDSHIRE FOOTBALL LEAGUE
SEASON 2007-2008**

will also be placed in a feeder pool and placed in the most geographically appropriate division at Step 2.

Step 3 and Step 4

The clubs in the bottom four places in each of the three divisions at Step 3 at the end of the playing season will be relegated to a feeder pool and placed in the most geographical appropriate division at Step 4. They will be replaced by the club finishing in 1st position in each of the divisions at Step 4 together with a further six clubs to be determined by a series of play off matches involving those clubs finishing in a play-off position (normally positions 2 to 5) in each of the divisions at Step 4. In exceptional circumstances where a club in positions 2 to 5 does not meet the criteria to enter the play-offs they should be replaced by a club finishing in the next eligible position. Clubs finishing below position 7 would not be considered.

The promoted clubs will also be placed in a feeder pool and placed in the most geographically appropriate division at Step 3.

Step 4 and Step 5

In normal circumstances, the clubs in the bottom two places in each of the six divisions at Step 4 will be replaced by the twelve most suitable clubs from the leagues at Step 5 as determined by the LC. Each of these leagues will nominate the club finishing in 1st position subject to meeting the entry criteria and wishing to be considered for promotion. In the event of the 1st placed club not being nominated, the club finishing in 2nd position can be nominated subject to the same criteria. Both the clubs relegated from Step 4 and the clubs to be promoted from Step 5 will be placed in a feeder pool and allocated to the most geographically appropriate league.

In the event that there are more clubs qualifying for promotion than spaces available, priority will be given to the Champion clubs in Step 5 leagues. If there remains vacancies, clubs finishing in 2nd place in Step 5 leagues will be ranked according to the average number of points gained per games played.

Clubs seeking promotion from Step 5 to Step 4 must make application in writing to The Football Association, copied to their existing league, by 31st December in the relevant year. The application must be accompanied by the agreed grading fee, as determined by the LC, which is non refundable. The Football Association will arrange for ground grading visits to take place before 31st March in the relevant year. A final list of clubs eligible to be considered for promotion will be published by 15th April. Final promotion will be subject to the criteria outlined in the paragraph above.

Step 5 to Step 6 and Step 6 to Step 7

The movement of clubs between Step 5 and Step 6 will continue as at present.

Clubs seeking promotion from Step 7 to Step 6 must make application in writing to The Football Association, copied to their existing league, by 31st December in the relevant year. A final list of clubs eligible to be considered for promotion will be published by 15th April. Final promotion will be subject to the current agreed criteria which will include a club's final league position and their ability to achieve the required ground grading.

**BEDFORDSHIRE FOOTBALL LEAGUE
SEASON 2007-2008**

All member leagues shall include in their constitutional rules and regulations provisions for the movement of clubs as detailed above.

- 4.4 Clubs will not be allowed to enter into a ground share agreement in order to gain promotion.

Only internal changes to the constitution of a league will be allowed following the holding of a league's annual general meeting.

**5. THE MOVEMENT OF CLUBS WITHIN THE NATIONAL LEAGUE SYSTEM
OTHER THAN BY PROMOTION OR RELEGATION**

- 5.1 Movement of a club from participation in one league to another is not permitted other than by promotion and relegation save with the approval of the LC.
- 5.2 Any club proposing to move from one league to another must make appropriate applications to resign from and be elected to the relevant leagues in accordance with the rules and regulations of those leagues. Any such notice must in any event, and regardless of any provisions to the contrary in a league's rules and regulations, be given to both leagues and the LC by 1st April in the relevant year in order to be valid in accordance with paragraph 5.1.
- 5.3 If a club (whether a Members' Club or a Company) is liquidated and then wishes to reform, unless otherwise determined by the LC, it will be allowed to make an application only to join a league/division a minimum of two Steps below the league/division in which it was a member when liquidated.
- 5.4 If a club (whether a Members' Club or a company) seeks to merge with another club provisional notification must be received by the LC and the league (s) of which the clubs are members by 31st December in the relevant year. Any proposed merger must be finalised by 31st March in the following year in order for the merged entity to be included in the league structure for the ensuing season.

6. ELECTION OF A CLUB INTO A LEAGUE

- 6.1 In normal circumstances a club can enter the NLS only at Step 7. However, in exceptional circumstances a league may seek approval from the LC to elect a club not currently in membership of a league within the NLS provided that there is: (a) a vacancy within its constitution (b) the club meets the entry criteria and (c) promotion and relegation issues have been satisfied.
- 6.2 Reserve teams will not be permitted to compete above Step 6 in the NLS. There must be a minimum of Two Steps between a first and reserve team. This does not apply at Steps 6 & 7. Reserve teams currently at Step 5 can remain unless relegated, once relegated they will not be permitted to be promoted back to Step 5.

**BEDFORDSHIRE FOOTBALL LEAGUE
SEASON 2007-2008**

7. NATIONAL LEAGUE SYSTEM WORKING GROUPS

National and Regional Working Groups will be formed comprising of representatives from leagues within the NLS and the LC to consider matters relevant to the development of the game within the System.

A Working Group may refer a matter to the LC for determination.

8. PROCEDURES FOR THE DETERMINATION OF ANY MATTER, DISPUTE OR DIFFERENCE BY THE LEAGUES COMMITTEE

8.1 The LC may adopt such procedures for the determination of any matter, dispute or difference as it considers appropriate and expedient, having regard to the aims and objectives set out at Regulation 1. The LC may require the attendance at a meeting or the written observations of any league or club, as it considers appropriate to assist its determination.

8.2 Any decision of the LC shall be subject to the right of appeal and the decision of an Appeal Board shall be final and binding on all parties.

8.3 The LC may, at its discretion, delegate the resolution of any matter, dispute or difference arising under these Regulations to any body it considers to be appropriate (including a sub-committee or commission which may include members of council not on the LC or a body constituted by a County Football Association).

9. DISPUTE PROCEDURE

9.1 Any dispute or difference between a league and a club relating to promotion and relegation issues and/or other eligibility criteria should be referred for determination to the LC; such determination shall be final and binding. Any referral must be carried out in accordance with The Football Association's appeal procedure and be submitted at the offices of The Football Association, 25 Soho Square, London W1D 4FA within 14 days of the posting of the relevant decision and must be accompanied by the appropriate fee as set out at 9.2.

9.2 The fees will be as follows:

Step 1 clubs - £250

Step 2 clubs - £200

Step 3 clubs - £150

Step 4 clubs - £100

Other clubs - £50

10. ARBITRATION

The fact of participation in the NLS and signifying agreement to be bound by these Regulations shall constitute an agreement between each league and club to refer to Arbitration any challenge in law arising out of, or in relation to, these Regulations in accordance with the provisions of the Rules of The Football Association.

**BEDFORDSHIRE FOOTBALL LEAGUE
SEASON 2007-2008**

**LEAGUES/DIVISIONS AT STEPS 5, 6 & 7 OF THE NATIONAL LEAGUE
SYSTEM**

Step 5	Step 6	Step 7
Combined Counties League Premier Div Eastern Counties League Div 1 Essex Senior League Hellenic League Premier Div Kent League Midland Football Alliance North West Counties League Div 1 Northern Counties East League Premier Div Northern League Div 1 Spartan South Midlands League Premier Div Sussex County League Div 1 United Counties League Premier Div Wessex League Premier Div Western League Premier Div	Combined Counties League Div 1 Eastern Counties League Div 2 Hellenic League Div 1 East Hellenic League Div 1 West Midland Combination Premier Div North West Counties League Div 2 Northern Counties East Div 1 Northern League Div 2 South West Peninsula League Premier Div Spartan South Midlands League Div 1 Sussex County League Div 2 United Counties League Div 1 Wessex League Div 1 West Midlands (Regional) League Premier Div Western League Div 1	Anglian Combination Premier Div Bedfordshire League Premier Div Brighton Hove & District League Premier Div Cambridgeshire County League Premier Div Crawley & District League Premier Div Central Midlands League Supreme Div Dorset Premier League East Berkshire League Premier Div East Sussex League Premier Div Essex Olympian League Div 1 Essex & Suffolk Border League Premier Div Gloucestershire County League Premier Div Hertfordshire Senior County League Premier Div Kent County League Premier Div Leicestershire Senior League Premier Div Liverpool County Premier League Premier Div Manchester League Premier Div Mid Cheshire League Div 1 Mid Sussex League Premier Div Middlesex County League Premier Div Midland Combination Div 1 North Berkshire League Div 1 Northampton Town League Premier Div Northamptonshire Combination Premier Div Northern Football Alliance Premier Div Oxfordshire Senior League Premier Div Peterborough & District League Premier Div Reading League Senior Div Somerset County League Premier Div South West Peninsula League Div 1 East South West Peninsula League Div 1 West Spartan South Midlands League Div 2 Staffordshire County Senior League Premier Div Suffolk & Ipswich League Senior Div Sussex County League Div 3 Wearside League West Cheshire League Div 1 West Lancashire League Premier Div West Midlands (Regional) League Div 1 West Sussex League Premier Div Wiltshire Football League Premier Div Worthing & District League Premier Div

NOTES

NOTES

NOTES

SPORTSFORM

**SUPPORTERS OF THE BEDFORDSHIRE FOOTBALL LEAGUE
PHONE FOR FRIENDLY ADVICE AND SERVICE**

01234 210005

**56 BROMHAM ROAD
BEDFORD MK40 2QG**

**Football, Racquet Sports, Bowls, and School Kit
Specialists – In-house printing, embroidery, and
engraving service.**

**Huge range of trophies, medals, signs, and corporate
gifts.**

**Click on our website for full information
www.sportsform.co.uk**

SPORTSFORM

